

ACE



SPRING PREBOOK 2024





THE STRONGEST, LONGEST LASTING CAST TRUCK ON EARTH.

The Ace AF1 is the strongest and longest lasting cast truck available. These trucks are manufactured using our proprietary casting process, which produces a stronger and tighter grain structure within the aluminum.

AF1 come equipped with high quality suspension including hand-poured pivot cups and break in bushings, making these trucks ready to rip in no time at all. Each truck comes standard with re-threading axle nuts ensuring your axle never strips. As a bonus, an additional red re-threader die is included, keep it on your key chain and you'll be a hero to a friend in need. Tested and approved by our team of Ace Pilots, AF1 is the gold-standard in cast truck technology, griding through burly ledges and pool coping has never felt so good!





ACE

LIMITED

Introducing Ace Limited, a specially crafted offering with each new design incorporating unique features not found in the rest of the Ace lineup. Over time the Ace Limited will program will include models created in tandem with Ace Pilots, in collaboration with our esteemed brand partners, and new creative touches we've dreamt up in house. For the inception, we've tapped two Ace OG's, Brian Anderson and Didrik "Deedz" Galasso, inviting them to put their personal touch on the current AF1 lineup.



ACE
LIMITED

BRIAN
ANDERSON
ACE AF1



NEW AF1

BRIAN ANDERSON AF1 LTD.

SIZES: 44 / 55 / 66

FEATURES: 3 COLOR HIGH-GLOSS BASEPLATE / 2 COLOR REVERSE PAINTED HANGER
"BA" MONOGRAM / LASER ETCHED "STREET PIRATE" AXLE



BRIAN ANDERSON

ACE AF1



FRONT



BACK

DOUBLE PAINTED HANGERS



POLISHED ALUMINUM

OFF-WHITE

BLACK



OFF-WHITE (HIGH GLOSS) BASEPLATE WITH RED & BLACK LOGO PRINT



"STREET PIRATE" LASER ETCHED AXLES

ACE
LIMITED

DEEZ
ACE AF1
CHECKER



NEW AF1 HOLLOW
DIDRIK "DEEZ" GALASSO AF1 LTD.

SIZES: 44 / 55 / 60

FEATURES: ROUTED DEEZ LOGO / HIGH-GLOSS BLACK BASEPLATE & HANGER
SIX SPEED RINGS / WHITE PRINTED HANGER ARTWORK



DEEDZ
AF1 HOLLOW
CHECKER



DEEDZ' OWN TIGER WEB DESIGN (PRINTED)



HIGH-GLOSS BLACK



ROUTED  TAG



DEEDZ' SIGNATURE TRIPLE SPEED RINGS



NOW AVAILABLE **AF1 HOLLOW**

80

FEATURES: 10" WIDE AXLE / HIGH QUALITY SUSPENSION / HAND Poured PIVOT CUPS
NO SLIP AXLES / THE STRONGEST AND LONGEST LASTING CAST TRUCK AVAILABLE





MATTE BLACK

LIME SATIN

ANODIZED
ORANGE & BLUE

GOLD

POLISHED

AF1



AF1 HOLLOW

POLISHED



AF1 LOW

POLISHED

SIZE CHART

ACE

TRUCKS MFG



AF1

| SIZE | AXLE WIDTH | BOARD FIT | HANGER WIDTH | HEIGHT | WEIGHT (OUNCES) | WEIGHT (GRAMS) |
|------|------------|---------------|--------------|-----------------|-----------------|----------------|
| 22 | 7.75" | 7.25" - 8.00" | 5.2" (132mm) | 2.1" (53 MM) | 12.925 | 366 |
| 33 | 8.00" | 8.00" - 8.25" | 5.4" (137mm) | | 13.371 | 379 |
| 44 | 8.25" | 8.25" - 8.50" | 5.6" (143mm) | | 13.666 | 387 |
| 55 | 8.50" | 8.50" - 8.75" | 5.8" (149mm) | | 13.981 | 396 |
| 60 | 8.75" | 8.75" - 9.00" | 6.1" (155mm) | | 14.287 | 405 |
| 66 | 9.00" | 9.00" - 9.25" | 6.4" (163mm) | | 14.531 | 412 |
| 77 | 9.5" | 9.25" - 9.75" | 6.9" (175mm) | | 15.062 | 427 |
| 80 | 10" | 9.75" - ABOVE | 7.4" (188mm) | | 15.593 | 434 |

AF1 LOW

| | | | | | | |
|-----------|-------|---------------|--------------|------------------|--------|-----|
| 22 LOW | 7.75" | 7.25" - 8.00" | 5.2" (132mm) | 1.93" (49 MM) | 12.292 | 348 |
| 33 LOW | 8.00" | 8.00" - 8.25" | 5.4" (137mm) | | 12.716 | 361 |
| 44 LOW | 8.25" | 8.25" - 8.50" | 5.6" (143mm) | | 13.033 | 370 |
| 55 LOW | 8.50" | 8.50" - 8.75" | 5.8" (149mm) | | 13.351 | 379 |
| 60 LOW | 8.75" | 8.75" - 9.00" | 6.1" (155mm) | | 13.668 | 388 |

AF1 HOLLOW

| | | | | | | |
|--------------|-------|---------------|--------------|-----------------|--------|-----|
| 22 HOLLOW | 7.75" | 7.25" - 8.00" | 5.2" (132mm) | 2.1" (53 MM) | 12.000 | 340 |
| 33 HOLLOW | 8.00" | 8.00" - 8.25" | 5.4" (137mm) | | 12.398 | 352 |
| 44 HOLLOW | 8.25" | 8.25" - 8.50" | 5.6" (143mm) | | 12.673 | 359 |
| 55 HOLLOW | 8.50" | 8.50" - 8.75" | 5.8" (149mm) | | 12.984 | 368 |
| 60 HOLLOW | 8.75" | 8.75" - 9.00" | 6.1" (155mm) | | 13.276 | 376 |
| 66 HOLLOW | 9.00" | 9.00" - 9.25" | 6.4" (163mm) | | 13.488 | 382 |
| 77 HOLLOW | 9.5" | 9.25" - ABOVE | 6.9" (175mm) | | 13.982 | 396 |
| 80 HOLLOW | 10" | 9.5" - ABOVE | 7.4" (188mm) | | 14.462 | 410 |

FCE CLASSIC



POLISHED



RED/POLISHED



MATTE BLACK



SAPPHIRE

A skateboarder in a dark long-sleeve shirt, dark pants, and a green cap is captured mid-air, performing a trick in a concrete skate bowl. The skateboarder is holding a skateboard with a colorful graphic of a character's face. A large, detailed graphic of a silver skateboard truck is overlaid on the left side of the bowl. The background shows the concrete structure of the bowl, a black metal railing, and a clear blue sky with some clouds. The overall scene is dynamic and emphasizes the performance aspect of the product.

FCE CLASSIC

Our Classic design isn't going anywhere! 7071 Aluminum and 3056 steel axles provide performance that is tried and true. Tapered hanger ends and oversized axles allow for better bearing performance. This is where we began and our evolution will continue with the Classic model line that delivers unmatched turn and grind performance at a price point all can enjoy.

POLISHED CLASSIC SIZES: 00 / 11 / 22 / 33 / 44 / 55 / 66

RONNIE SANDOVAL / STALEFISH

SIZE BY SIZE COMPARISON

AF1 vs. CLASSIC



| MODEL | AF1 AXLE WIDTH | CLASSIC AXLE WIDTH |
|-------|--------------------------|------------------------------|
| 00 | | 6.5" |
| 11 | | 7.0" |
| 22 | 7.75" | 7.6" |
| 33 | 8.0" | 8.0" |
| 44 | 8.25" | 8.35" |
| 55 | 8.5" | 9.0" |
| 60 | 8.75" | |
| 66 | 9.0" | 9.35" |
| 77 | 9.5" | |
| 80 | 10" | |

ACE AF1

HOLLOW HARDWARE

WITH MICRO-GRIP TECHNOLOGY

*PATENT PENDING



SIZES:
7/8" 1" 1 1/4"



KEVIN "SPANKY" LONG

AF1 SKATE TOOL



BUILT-IN KINGPIN RE-THREADER DIE



BUILT-IN AXLE RE-THREADER DIE



CLASSIC SKATE TOOL //

PHILIPS & ALLEN
SCREWDRIVER

AXLE NUT
TOOL

KINGPIN NUT
TOOL

UNASSEMBLED

MOUNTING
HARDWARE
TOOL

COLLAPSED MODE



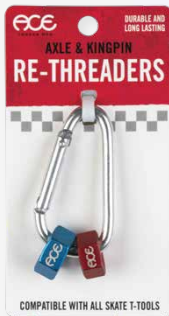
RE-THREADERS

KINGPIN
RE-THREADER
DIE



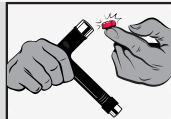
CARABINER

AXLE
RE-THREADER
DIE



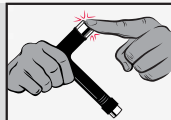
STEP ONE

Select the correct re-threading die. Match it to the correct chamber on your skate tool.



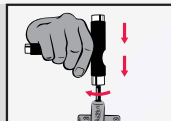
STEP TWO

Firmly push the re-threader into the chamber. Hold in place as you set the skate tool onto the axle or kingpin.



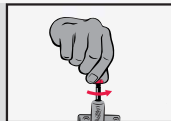
STEP THREE

As you apply downward pressure, slowly turn the skate tool to the right to engage and start cleaning your threads.



STEP FOUR

Loosen the die with your skate tool. Use your fingers to remove the die off of the end of the axle.



ACE RECOMMENDS

Using oil before starting the re-threading process. We also suggest that you clean your axles with a microfiber cloth once finished.



91a
86a

STOCK/MEDIUM BUSHINGS
COMPATIBLE WITH AF1 & CLASSICS



94a
94a

HARD BUSHINGS
COMPATIBLE WITH AF1 & CLASSICS



96a

AF1 PIVOT CUPS
HAND Poured URETHANE (2 PACK)



91a
86a

LOW STOCK/MEDIUM BUSHINGS
COMPATIBLE WITH AF1 & CLASSICS



94a
94a

LOW HARD BUSHINGS
COMPATIBLE WITH AF1 & CLASSICS



96a

CLASSIC PIVOT CUPS
PERFORMANCE URETHANE (2 PACK)



7/8" ALLEN BOLT
PREMIUM STEEL HARDWARE



1" ALLEN BOLT
PREMIUM STEEL HARDWARE



1 1/4" ALLEN BOLT
PREMIUM STEEL HARDWARE



7/8" PHILLIPS BOLT
PREMIUM STEEL HARDWARE



1" PHILLIPS BOLT
PREMIUM STEEL HARDWARE



1 1/4" PHILLIPS BOLT
PREMIUM STEEL HARDWARE



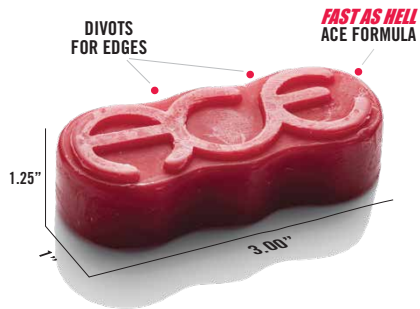
1/16" RUBBER SHOCK PADS
SET OF 2



1/8" PLASTIC SHIMS
SET OF 2



MICRO WAX



RED



CLEAR



GLOW



TIGERWEB

SHORT SLEEVE T-SHIRT / 100% COTTON / SOFT HAND INKS
UNISEX SIZES: S - XL

NEW!
NEW!



BLACK

WORLD-CLASS POCKET

SHORT SLEEVE POCKET T-SHIRT / 100% COTTON / SOFT HAND INKS
UNISEX SIZES: S - 2XL

NEW!
NEW!



NAVY

06

SHORT SLEEVE T-SHIRT / 100% COTTON / SOFT HAND INKS
UNISEX SIZES: S - XL

ARTWORK BY: ANDY JENKINS



ROYAL

SEAL

SHORT SLEEVE T-SHIRT / 100% COTTON / SOFT HAND INKS
UNISEX SIZES: S - 2XL



WHITE

RINGS

SHORT SLEEVE T-SHIRT / 100% COTTON / SOFT HAND INKS
UNISEX SIZES: S - XL

NEW!
NEW!



NATURAL

RINGS PULLOVER

PULLOVER FLEECE HOODIE / 7.8 OZ / 50/50 COTTON/ POLY FLEECE / SOFT HAND INKS
UNISEX SIZES: S - 2XL

NEW!
NEW!



HEATHER
GREY

Mesa

Dist.

MESA DISTRIBUTION

10591 HUMBOLT STREET LOS ALAMITOS, CA 90720

MATT WARD - [MWARD@MESADISTRIBUTION.COM](mailto:mward@mesadistribution.com)

BRIAN BROWN - [BBROWN@MESADISTRIBUTION.COM](mailto:bbrown@mesadistribution.com)

ANDY OWENS (INT.) - [ANDY@MESADISTRIBUTION.COM](mailto:andy@mesadistribution.com)

GENERAL INQUIRIES - [SALES@MESADISTRIBUTION.COM](mailto:sales@mesadistribution.com)

b2b.mesadistribution.com
mesadistribution.com

COVER: MYLES WILLARD
PHOTO: KARPINSKI

ANTHONY VEGA / BLUNT PHOTO: KARPINSKI