

ARBOR

2024

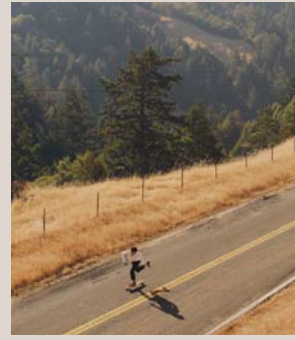


MINDFULLY CRAFTED
SINCE MCMXXV
VENICE, CA



FROM
THE
FOUNDER

X



In 1995, Arbor became the first brand specifically founded to focus on sustainable production and environmental conservation within snowboarding and skateboarding. We are here today thanks to a community that agreed with the brand's basic premise - protecting the planet is about looking after our shared playground.

I am stoked to see how our skateboard program has become such an incredible reflection of the collective approach we take to running the brand. Our expanding level of collaboration with athletes, artists, shapers, and even other brands has helped us highlight what Arbor stands for in a powerful, very personal way.

Much thanks to everyone who contributes to what Arbor is.

Bob Carlson

MINDFULLY CRAFTED SINCE DAY ONE

Forest TO Forest

Arbor was founded to build the most mindfully crafted snowboards and skateboards possible. Since day one, we have used sustainable, environmentally friendly forest products to achieve this objective. We've also donated a portion of every sale to the restoration and preservation of endangered forests. Arbor will continue to stand by our original commitments:

Leaving It Better



1 FROM THE FOREST

Only use natural, highly renewable, sustainably sourced wood and bamboo from well-managed forests, and other non-forest sources.



2 VERIFIED SUSTAINABLE

Ensure all forest products are sustainable and certified by reliable organizations, including the Forest Stewardship Council.



3 MAXIMIZE TO MINIMIZE

Process all forest product using methods that stretch each resource, maximizing our materials, and minimize our impact on the planet.



4 INNOVATE NATURALLY

Convert our natural fiber tops into structural layers that improve pop and durability, reducing our reliance on non-biodegradable composites.



5 REDUCE WASTE

Reclaim all wood by-product for use in other Arbor products or by outside companies, reducing the strain on landfills and forests.



6 RE-USE EXCESS

Regrind trimmed materials into our Signature Series wheel cores to provide high performance while utilizing materials that would have gone into landfills.



7 CONSCIOUS COMPONENTS

Use recycled crushed glass for our ultra clear re-grit surface, allowing the decks natural grain to remain highly visible, while providing better performance.



8 TO THE FOREST

Support the restoration of Hawaii's forests, giving back to the planet, and the people, place, & forests at the roots of surfing snow, sidewalk, & swell.

Than We Found It



NOT JUST PLANTING TREES, REBUILDING FORESTS



Returning Roots

SINCE DAY ONE, A PORTION OF EVERY SALE

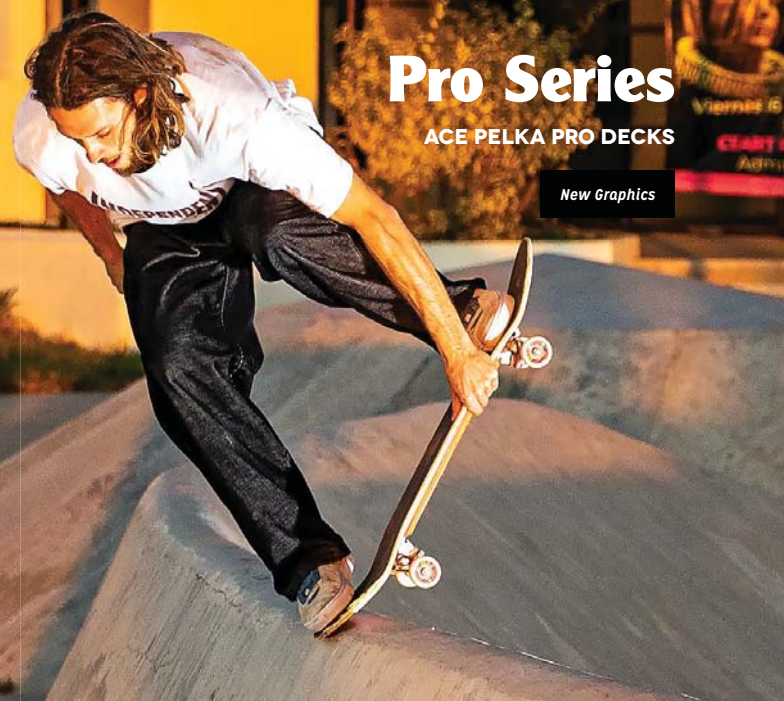
HAS GONE TO RESTORING HAWAII'S NATIVE KOA FORESTS, GIVING BACK TO

THE PEOPLE AND PLACE THAT GOT US

SURFING SWELL, SIDEWALKS, AND SNOW.

600,000+ TREES AND COUNTING

#ReturningRoots



Pro Series

ACE PELKA PRO DECKS

New Graphics

ACE 8.375" BALANCE

Available SP24

L: 32.00" W: 8.375" WB: 14.25"

Deck: ABR-SKD-0186

ACE 8.75" BALANCE

Available SP24

L: 32.00" W: 8.75" WB: 14.25"

Deck: ABR-SKD-0185

Sustainable Canadian Maple

Unconventional street skater Ace Pelka, best known for tight slappies and wall rides, seamless grinds, and stylish, all-terrain lines, has joined up with Arbor Skateboards.



Pro Series

GREYSON FLETCHER PRO DECKS

New Graphics & Shapes

GREYSON 8.625" FACES

Available SP24

L: 32.00" W: 8.625" WB: 14.25"

Deck: ABR-SKD-0187

GREYSON 8.875" FACES

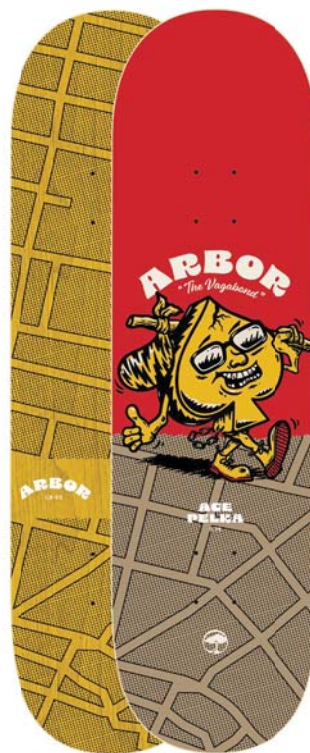
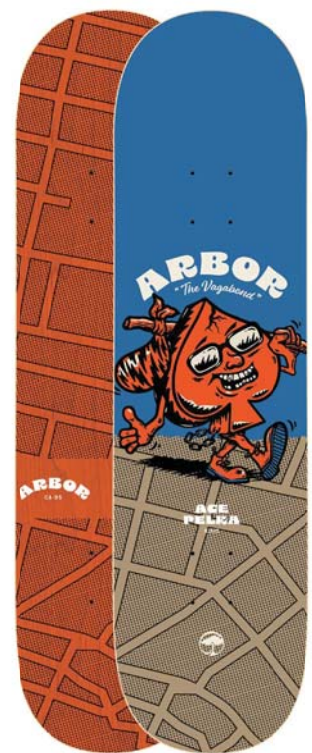
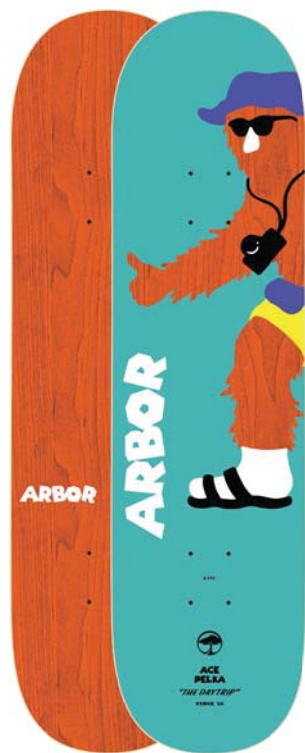
Available SP24

L: 32.125" W: 8.875" WB: 14.375"

Deck: ABR-SKD-0188

Sustainable Canadian Maple

Driven by our shared love for skate, snow and surf, we're proud to have Greyson Fletcher a part of the Arbor Collective's core skate program. We look forward to showcasing his newest graphics, inspired by his original artwork, this captivating fusion of vibrant surrealism and cultural symbolism is one of a kind. As is his unmistakable style and raw skateboarding power.



ACE 8.375" DAYTRIPPER

Available SU/FA24

L: 32.00" W: 8.375" WB: 14.25"

Deck: ABR-SKD-0200

ACE 8.75" DAYTRIPPER

Available SU/FA24

L: 32.00" W: 8.75" WB: 14.25"

Deck: ABR-SKD-0199

ACE 8.375" VAGABOND

Available HOL24

L: 32.00" W: 8.375" WB: 14.25"

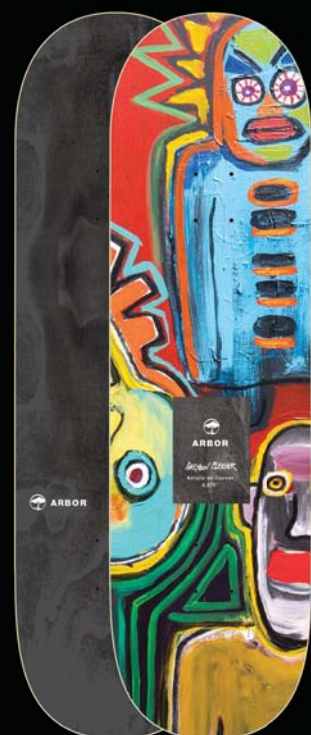
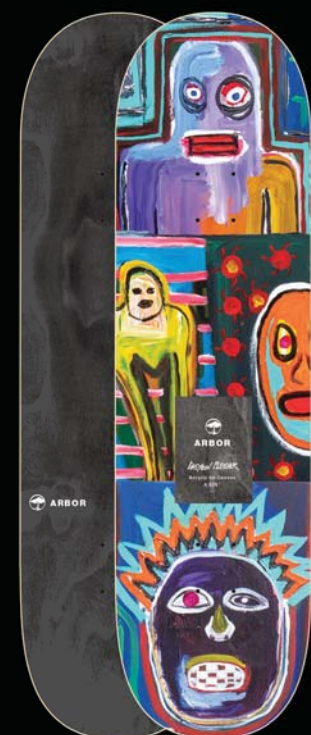
Deck: ABR-SKD-0209

ACE 8.75" VAGABOND

Available HOL24

L: 32.00" W: 8.75" WB: 14.25"

Deck: ABR-SKD-0208



GREYSON 8.625" COLLAGE

Available SU/FA24

L: 32.00" W: 8.625" WB: 14.25"

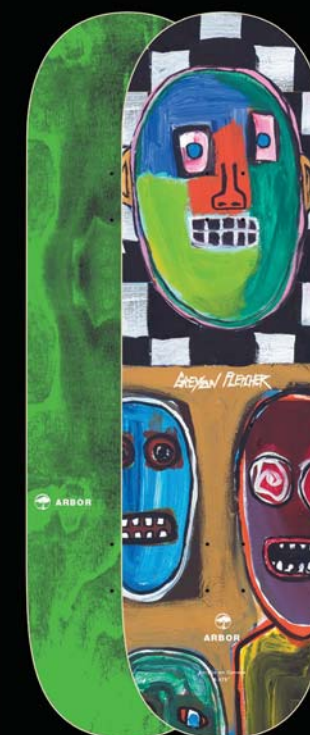
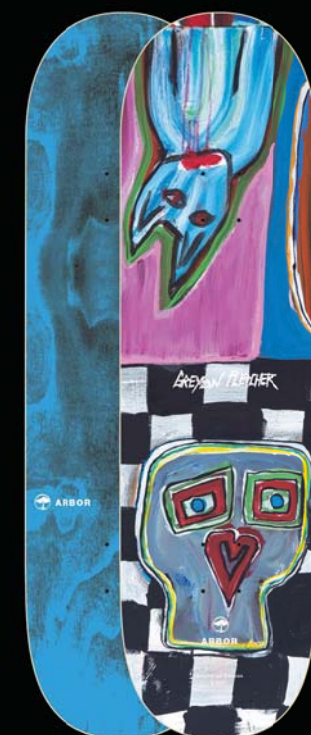
Deck: ABR-SKD-0196

GREYSON 8.875" COLLAGE

Available SU/FA24

L: 32.125" W: 8.875" WB: 14.375"

Deck: ABR-SKD-0197



GREYSON 8.625" CHECKER

Available HOL24

L: 32.00" W: 8.625" WB: 14.25"

Deck: ABR-SKD-0205

GREYSON 8.875" CHECKER

Available HOL24

L: 32.125" W: 8.875" WB: 14.375"

Deck: ABR-SKD-0206



Pro Series

AMELIA BRODKA PRO DECKS

New Graphics

Sustainable Canadian Maple

Consistently being a leader in the skateboard community, Amelia Brodka continues to build on her legacy. Her shape blends modern street and classic pool shapes.



AMELIA 8.25 NEURON
Available SP24

L: 32.00" W: 8.25" WB: 14.5"
Deck: ABR-SKD-3560

AMELIA 8.5 NEURON
Available SP24

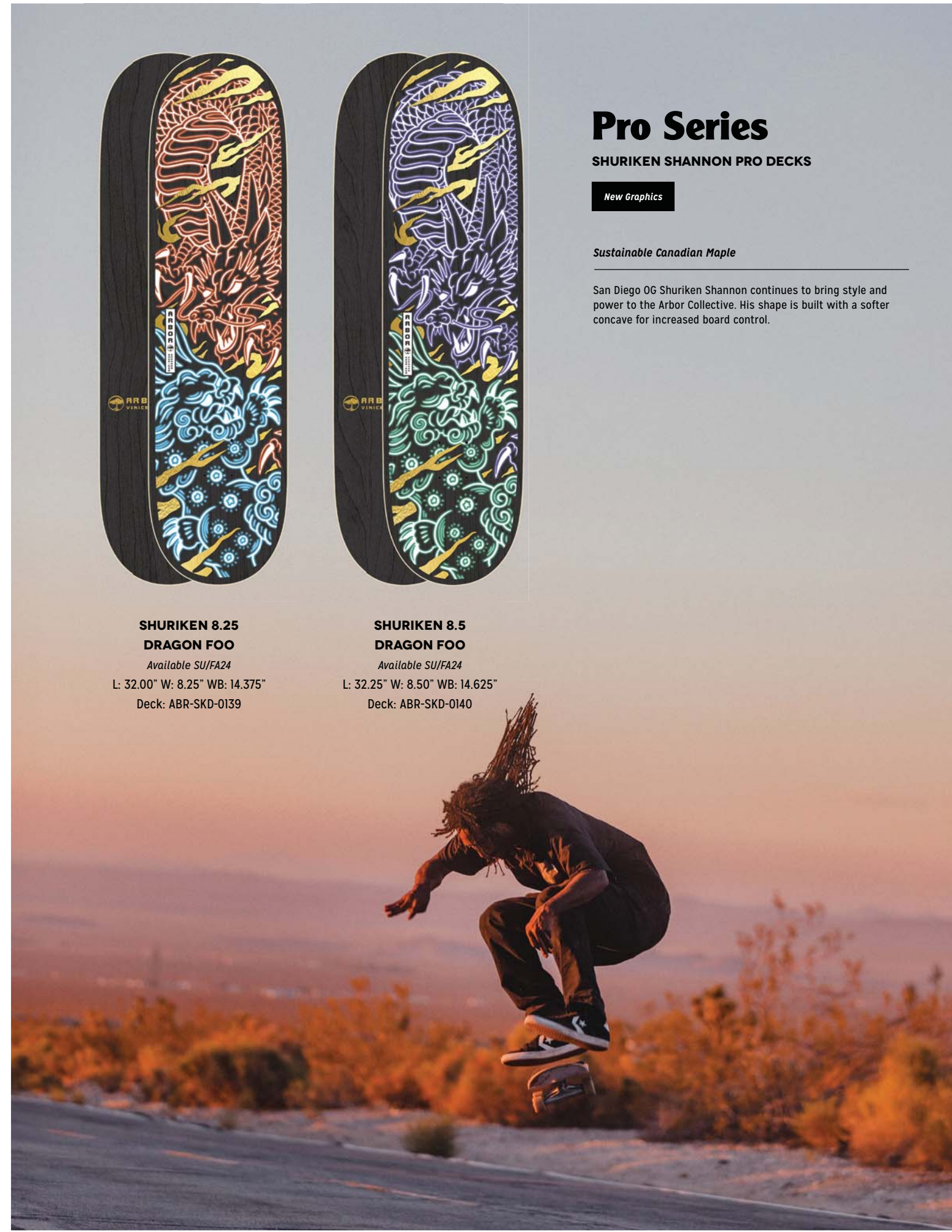
L: 32.25" W: 8.5" WB: 14.625"
Deck: ABR-SKD-3561

AMELIA 8.25 CERAMIKA
Available HOL24

L: 32.00" W: 8.25" WB: 14.5"
Deck: ABR-SKD-0210

AMELIA 8.5 CERAMIKA
Available HOL24

L: 32.25" W: 8.5" WB: 14.625"
Deck: ABR-SKD-0211



Pro Series

SHURIKEN SHANNON PRO DECKS

New Graphics

Sustainable Canadian Maple

San Diego OG Shuriken Shannon continues to bring style and power to the Arbor Collective. His shape is built with a softer concave for increased board control.



SHURIKEN 8.25 DRAGON FOO
Available SU/FA24
L: 32.00" W: 8.25" WB: 14.375"
Deck: ABR-SKD-0139



SHURIKEN 8.5 DRAGON FOO
Available SU/FA24
L: 32.25" W: 8.50" WB: 14.625"
Deck: ABR-SKD-0140

Sustainable Canadian Maple

An all-round street and park shape with a medium concave developed by our team for versatile all-terrain skating. Featuring Ace Trucks

Street Series

New Graphics

Sustainable Canadian Maple

An all-round street and park shape with a medium concave developed by our team for versatile all-terrain skating. Featuring Ace Trucks

Street Series

New Graphics



INKED 8.0

Available SP24

L: 31.75" W: 8.00" WB: 14.125"

Complete: ABR-COM-3550

INKED 8.25

Available SP24

L: 32.00" W: 8.25" WB: 14.25"

Complete: ABR-COM-3551

INKED 8.5

Available SP24

L: 32.25" W: 8.50" WB: 14.50"

Complete: ABR-COM-3552

DAISY 8.0

Available HOL24

L: 31.75" W: 8.00" WB: 14.125"

Complete: ABR-COM-3583

DAISY 8.25

Available HOL24

L: 32.00" W: 8.25" WB: 14.25"

Complete: ABR-COM-3584

DAISY 8.5

Available HOL24

L: 32.25" W: 8.50" WB: 14.50"

Complete: ABR-COM-3585

Sustainable Canadian Maple

An all-round street and park shape with a medium concave developed by our team for versatile all-terrain skating. Featuring Ace Trucks

Street Series



LOGO 7.75

Available Now

L: 31.50" W: 7.75" WB: 13.875"
Complete: ABR-COM-3545

LOGO 8.0

Available Now

L: 31.75" W: 8.00" WB: 14.125"
Complete: ABR-COM-3546

LOGO 8.25

Available Now

L: 32.00" W: 8.25" WB: 14.25"
Complete: ABR-COM-3547

LOGO 8.5

Available Now

L: 32.25" W: 8.50" WB: 14.50"
Complete: ABR-COM-3548

Sustainable Canadian Maple

A youth-oriented smaller street shape for kids to learn on and grow with. Featuring Ace Trucks

Seed Series

New Graphics



CHOMP 7.25

Available HOL24

L: 28.25" W: 7.25" WB: 12.00"
Complete: ABR-COM-3586

CHOMP 7.5

Available HOL24

L: 28.50" W: 7.50" WB: 12.25"
Complete: ABR-COM-3587

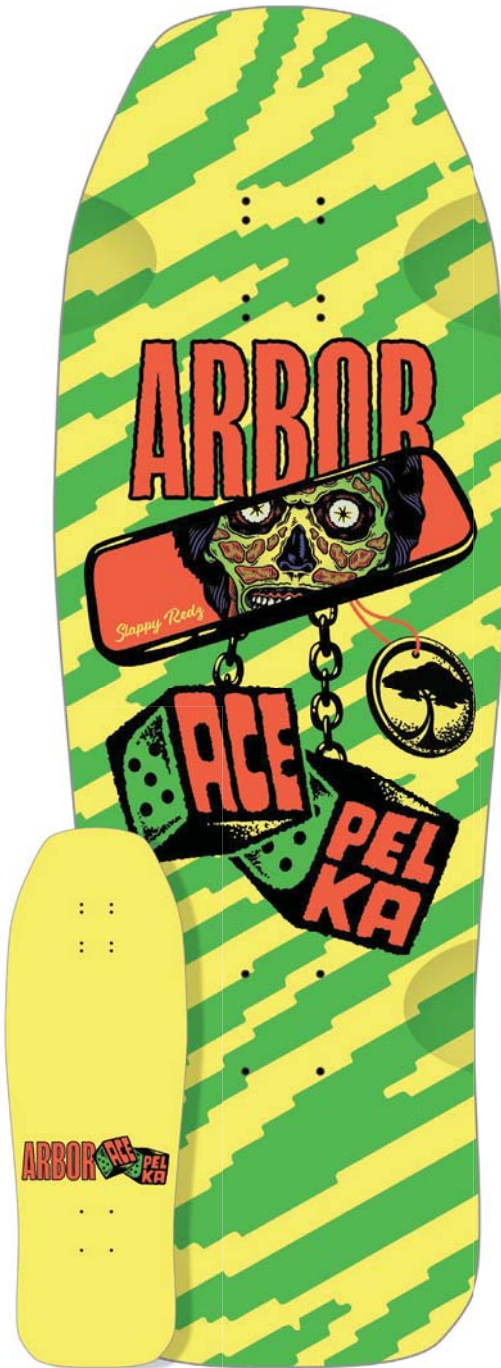
Sustainable Canadian Maple

Ace Pelka's shaped deck is built with a medium concave to provide plenty of board feel. Ace's Legacy deck features a 10" wide deck with a blunt hammer shaped nose, wide platform and shorter wheelbase for both street skating and tight transition.

Legacy Series

ACE PELKA MODELS

New Graphics



REARVIEW

Available SP24

L: 30.00" W: 10.00" WB: 14.5 - 15"

Deck: ABR-SKD-0184

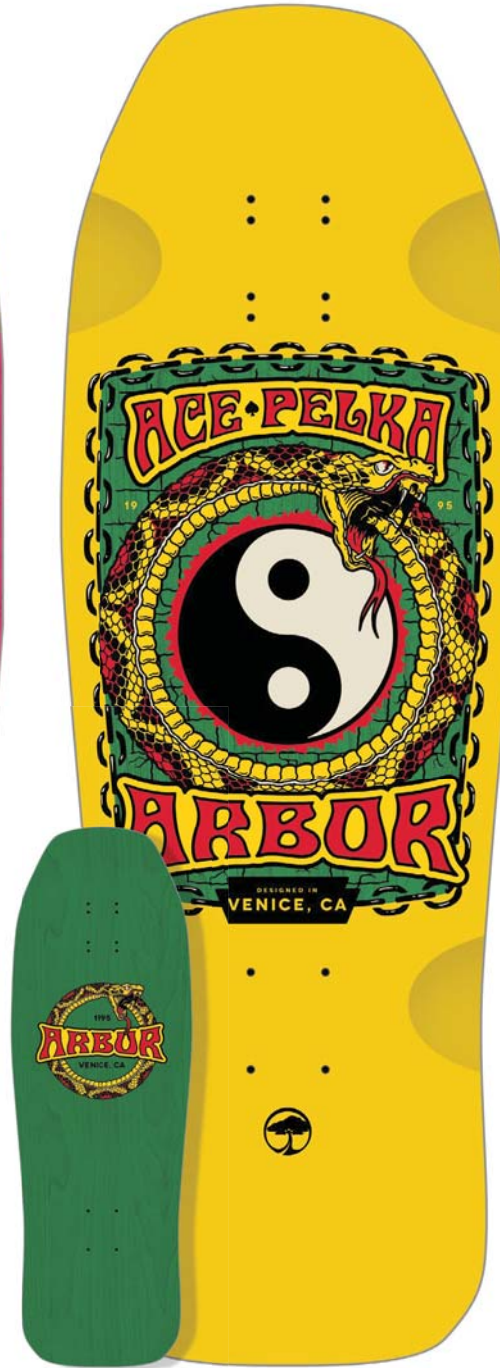


FIBONACCI

Available SU/FA24

L: 30.00" W: 10.00" WB: 14.5 - 15"

Deck: ABR-SKD-0198



ORDER AND CHAOS

Available HOL24

L: 30.00" W: 10.00" WB: 14.5 - 15"

Deck: ABR-SKD-0207

Legacy Series

GREYSON FLETCHER MODEL

New Model

Sustainable Canadian Maple

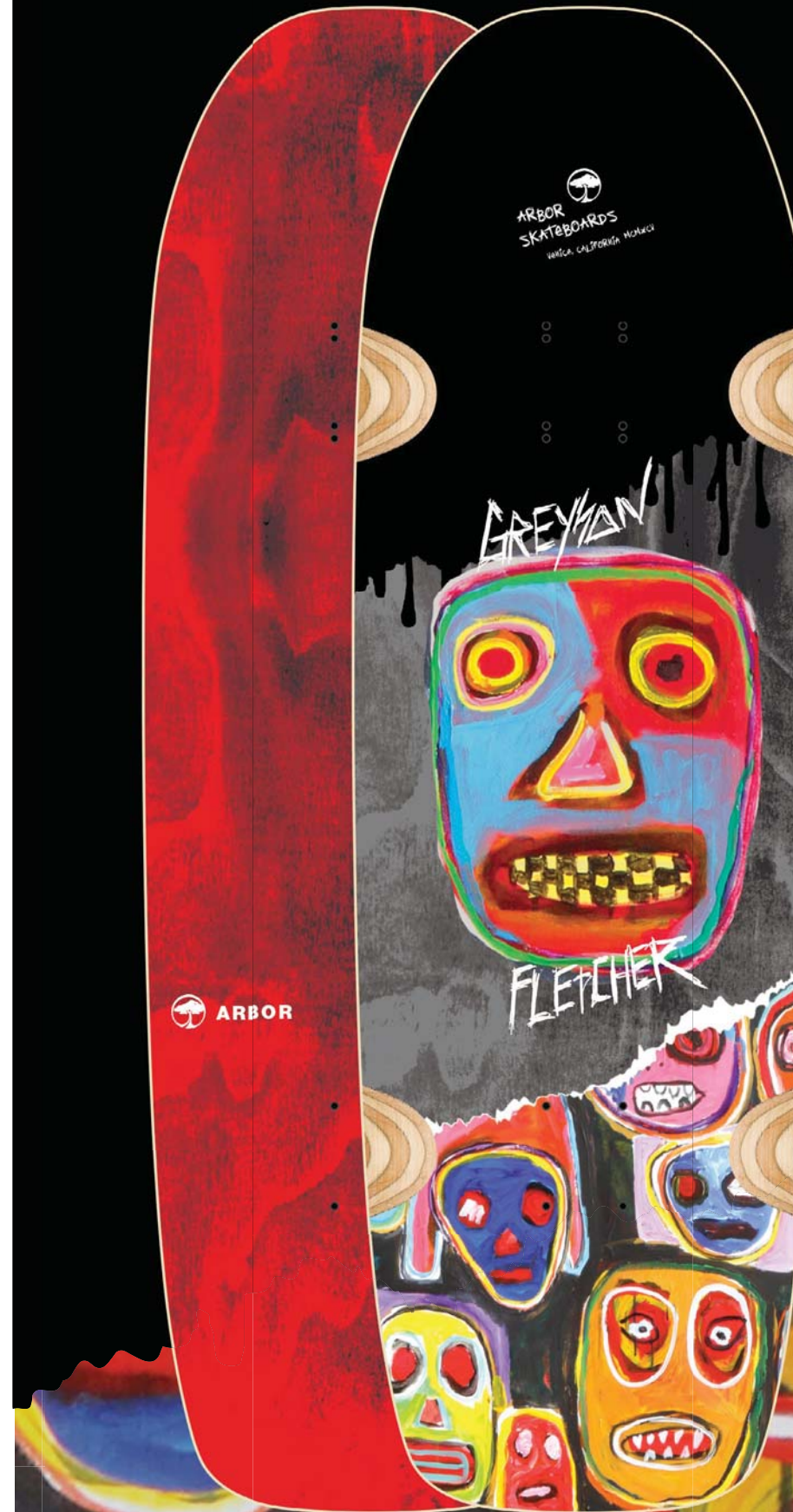
Greyson's Portal Hopper deck is built with a medium concave to provide a more balanced board feel. It features a shovel nose, fuller tail, and a 9.75" wide standing platform, making it great for shredding a wide variety of terrain. Whether you're carving the bowl or cruising down to the beach for a surf - the Portal Hopper can take you to whatever dimension you want.

PORTAL HOPPER

Available SP24

L: 32.00" W: 9.75" WB: 14.25 - 14.5"

Deck: ABR-SKD-0189



Sustainable Canadian Maple

Modern takes on some of our favorite street shapes from the 80s and 90s.

Legacy Series

TEAM DECKS

New Models



MARTILLO TRIPPED

Available SP24

L: 31.75" W: 9.00" WB: 14.625"

Deck: ABR-SKD-0191

OSO TRIPPED

Available SP24

L: 30.00" W: 10.00" WB: 15.50"

Deck: ABR-SKD-0190

Sustainable Canadian Maple

Modern takes on some of our favorite street shapes from the 80s and 90s.

Legacy Series

TEAM COMPLETES

New Graphics



PISTOLA SPELLBOUND

Available SU/FA24

Ace 55 Classic Trucks
Arbor Revert 56mm 92A Wheels
ABEC 7 Bearings w/ Spacers

L: 32.50" W: 9.25" WB: 15.50"
Complete: ABR-COM-3591

CUCHARON SPELLBOUND

Available SU/FA24

Ace 55 Classic Trucks
Arbor Revert 56mm 92A Wheels
ABEC 7 Bearings w/ Spacers

L: 32.375" W: 8.75" WB: 14.75"
Complete: ABR-COM-3589

MARTILLO SPELLBOUND

Available SU/FA24

Ace 55 Classic Trucks
Arbor Revert 56mm 92A Wheels
ABEC 7 Bearings w/ Spacers

L: 31.75" W: 9.00" WB: 14.625"
Complete: ABR-COM-3589

OSO SPELLBOUND

Available SU/FA24

Ace 66 Classic Trucks
Arbor Bogart 61mm 78A Wheels
ABEC 7 Bearings w/ Spacers

L: 30.00" W: 10.00" WB: 15.50"
Complete: ABR-COM-3588

Sustainable Canadian Maple

Built for versatility, these hybrid shapes offer longer wheelbase for mixed street and freeride skating, allowing creativity for tricks at any speed.

Crosscut Series

DECKS

New Graphics



**SHAKEDOWN 37
DEATHROLL DECK**

Available SP24

L: 37.00" W: 9.25" WB: 18.75"
Deck: ABR-SKD-0192



**SHAKEDOWN 34
DEATHROLL DECK**

Available SP24

L: 34.00" W: 9.00" WB: 15.625"
Deck: ABR-SKD-0193



**SHAKEDOWN 34
RATS DECK**

Available HOL24

L: 34.00" W: 9.00" WB: 15.625"
Deck: ABR-SKD-0204

Crosscut Series

COMPLETES

New Graphics



**SHAKEDOWN 37
SCORPION COMPLETE**

Available SU/FA24

Paris Street 169mm Trucks
Shakedown 58mm 80A Wheels
ABEC 7 Bearings w/ Spacers

L: 37.00" W: 9.25" WB: 18.75"
Deck: ABR-COM-3578



**SHAKEDOWN 34
SCORPION COMPLETE**

Available SU/FA24

Paris Street 169mm Trucks
Arbor Suave - Axel Serrat 58mm 80A Wheels
ABEC 7 Bearings w/ Spacers

L: 34.00" W: 9.00" WB: 15.625"
Deck: ABR-COM-3579



C7 Surfskate Series

carver Collab

New Model

CARVER COLLAB: When we first started making skateboards in the 90's, it was nearly impossible to find a good standard truck with a wide hanger that could work with the shapes we were offering. We ended up connecting with another Venice, CA start-up that was casting trucks locally. That company was Carver. We've been proud to call them friends for almost 30 years.

When we decided to start making surfskates, and add Arbor's focus on sustainability to the category, we once again turned to Carver for trucks. We are stoked to be working with them again. Carver created the surfskate category, and continues to lead the way on performance and quality.

SHAPER CAPSULE: To tie together the surf heritage and shaping tradition of both Arbor and Carver, we have partnered with some of the today's most innovative surfboard shapers. These artisanal craftsmen are having an important impact on the surf industry today. We are honored to bring the distinct vision that each of them has for shape and design to this ultra-collaborative offering. Each design in the C7 Surfskate Series has been created by a different shaper.

JORDAN BRAZIE SURFSKATE

Available SP24

Carver C7 / C2.4 6.5" Trucks
7 Ply Sustainable Canadian Maple
Arbor Cannon 66mm 78A Wheels
ABEC 7 Bearings w/Spacers

L: 33.00" W: 10.00" WB: 20.00"
Complete: ABR-COM-3565

JORDAN BRAZIE

Jordan Brazie designs and shapes surfboards under his brand Valaric. Glassed by entrusted friends and experts who share the same values for exceptional quality. With 18 years of shaping experience, 9 being a production shaper for Wave Riding Vehicles, Jordan's path has crossed with many great board builders from the golden age to present. One could compare such a journey to the Japanese martial art concept of Shu-Ha-Ri. Always learning, always inspired, always creating.

The Brazie is a two-in-one outline design that brings speed and looseness to an egg-like mid-length surfskate design. This gives a rider the ability to carve from a more forward position on the board, providing added power and stability.



C7 Surfskate Series

carver Collab

New Model

BLACK ROSE SURFSKATE

Available SP24

Carver C7 / C2.4 6.5" Trucks
7 Ply Sustainable Canadian Maple
Arbor Cannon 66mm 78A Wheels
ABEC 7 Bearings w/Spacers

L: 30.75" W: 10" WB: 16.75"
Complete: ABR-COM-3564

BLACK ROSE MFG. / JUSTIN QUINTAL & RICKY CARROL

Black Rose Manufacturing stems from the combined generations of surf studies between world-class surfer Justin Quintal and master surfboard-shaper Ricky Carroll. In their pursuit to create timeless surf equipment they acknowledge progressive surfing does not provide all the answers. Nor does a stubborn inclination for the past. This is the fundamental principle of Black Rose Manufacturing. The goal is to oscillate and operate between the two in hopes of transcending their inherent limitations. The End result: surfboards that provide further insight into the practice of wave riding.

The Black Rose is a traditional fish based on Black Rose's Sheepshead model. There's a classic, super lively feel, and when paired with the Carver C7, the board retains plenty of thrust and agility. This is a great all around fish.



Sustainable Canadian Maple

Carver C7 / C2.4 6.5" Trucks
7 Ply Sustainable Canadian Maple
Arbor Cannon 66mm 78A Wheels
ABEC 7 Bearings w/Spacers

C7 Surfskate Series

carver Collab



RYAN LOVELACE SURFSKATE

Available Now

L: 32.00" W: 10.00" WB: 17.00"
Complete: ABR-COM-0107

Ryan Lovelace is a master hand shaper, known for his modern, performance-oriented takes on classic surfboard designs. Ryan is an incredibly prolific, do-it-all and do-it-well shaper, who's resin work is known for its dynamic use of color and pattern. Ryan is an all-around surfboard artist.

The Lovelace is a broad, rounded pin that's comfortable to skate, and provides the stable feel, and deep carve of a single fin.



TYLER WARREN SURFSKATE

Available Now

L: 29.00" W: 9.875" WB: 15.50"
Complete: ABR-COM-0108

Tyler Warren is known for his wide range of fast, responsive, out-of-the-box shapes. Tyler is a bit of a prodigy, who has been shaping since he was 14, developing a process over time that draws on a diverse range of influences, years as a sponsored free surfer, and training as an artist.

The Warren is based on Tyler's Soap shape, and designed to be a fast, loose, agile down the line, tighter carving skateboard.

Sustainable Canadian Maple

We are excited to launch our new CX Surfskate Series, expanding our collaboration with Carver Trucks. The CX truck is a more affordable option with a different geometry. The design is lighter and provides a more snappy turn. The CX retains Carver's unmatched quality and performance.

CX Surfskate Series

carver Collab

New Models



DAILY DRIVER SURFSKATE

Available SP24

Carver CX / C2 6.5" Trucks
7 Ply Sustainable Canadian Maple
Arbor Cannon 66mm 78A Wheels
ABEC 7 Bearings w/Spacers

L: 34.00" W: 10.50" WB: 18.50"
Complete: ABR-COM-3567



FAT FISH SURFSKATE

Available SP24

Carver CX / C2 6.5" Trucks
7 Ply Sustainable Canadian Maple
Arbor Cannon 66mm 78A Wheels
ABEC 7 Bearings w/Spacers

L: 32.00" W: 10.00" WB: 17.75"
Complete: ABR-COM-3566



SURF ROCKET SURFSKATE

Available SP24

Carver CX / C2 6.5" Trucks
7 Ply Sustainable Canadian Maple
Arbor Cannon 66mm 78A Wheels
ABEC 7 Bearings w/Spacers

L: 30.50" W: 9.50" WB: 16.50"
Complete: ABR-COM-3568



ARBOR

FLAGSHIP

SERIES

New Graphics

*Sustainable Canadian Maple and
Premium Top & Bottom Palisander Finish Plies*

The pinnacle of our line, built to highlight the renewable, craft-
ed, natural style of our signature wood finish since 1995.



AXIS 40 FLAGSHIP

Available HOL24

Paris Reverse 50° 180mm Trucks
Arbor Outlook 69mm 78A Wheels
ABEC 7 Bearings w/ Spacers

L: 40.00" W: 8.75" WB: 30.75"
Complete: ABR-COM-3580
Deck: ABR-SKD-0201

AXIS 37 FLAGSHIP

Available HOL24

Paris Reverse 50° 180mm Trucks
Arbor Outlook 69mm 78A Wheels
ABEC 7 Bearings w/ Spacers

L: 37.00" W: 8.50" WB: 26.00"
Complete: ABR-COM-3581
Deck: ABR-SKD-0202

DROPCRUISER FLAGSHIP

Available HOL24

Paris Reverse 50° 180mm Trucks
Arbor Outlook 69mm 78A Wheels
ABEC 7 Bearings w/ Spacers

L: 38.00" | W: 9.75" | WB: 29.25"
Complete: ABR-COM-3582
Deck: ABR-SKD-0203



GROUNDWELL SERIES



Sustainable Canadian Maple & Palisander Wood Topsheet

A full quiver of surf inspired guns for down-the-line cruising, slashing banks, and old school carving.



FISH GROUNDWELL

Available Now

Paris Reverse 50° 150mm Trucks
Arbor Mosh 65mm 78A Wheels
ABEC 7 Bearings w/ Spacers

L: 37.00" W: 8.50" WB: 26.00"
Complete: ABR-COM-3560



MISSION GROUNDWELL

Available Now

Paris Reverse 50° 150mm Trucks
Arbor Mosh 65mm 78A Wheels
ABEC 7 Bearings w/ Spacers

L: 35.00" W: 8.625" WB: 21.375"
Complete: ABR-COM-3561



RALLY GROUNDWELL

Available Now

Paris Reverse 50° 150mm Trucks
Arbor Mosh 65mm 78A Wheels
ABEC 7 Bearings w/ Spacers

L: 30.50" W: 8.875" WB: 20.00"
Complete: ABR-COM-3562



SIZZLER GROUNDWELL

Available Now

Paris Street 149mm Trucks
Arbor Bogart 61mm 78A Wheels
ABEC 7 Bearings w/ Spacers

L: 30.50" W: 8.625" WB: 17.00"
Complete: ABR-COM-3563

Foundation Series

COMPLETES



New Graphics

Sustainable Canadian Maple

Easy riding mini and mid-length cruisers, inspired by the craftsmanship and surf heritage of early skateboards.

CROSS STEP FOUNDATION

Available SU/FA24

Paris Reverse 50° 180mm Trucks
Arbor Outlook 69mm 78A Wheels
ABEC 7 Bearings w/ Spacers

L: 42.00" W: 9.75" WB: 29.00"
Complete: ABR-COM-3572



BREACH FOUNDATION

Available SU/FA24

Paris Street 129mm Trucks
Arbor Cannon 66mm 78A Wheels
ABEC 7 Bearings w/ Spacers

L: 34.00" W: 8.00" WB: 21.00"
Complete: ABR-COM-3573



SHAKEDOWN 34 FOUNDATION

Available SU/FA24

Paris Street 169mm Trucks
Arbor Bogart 61mm 78A Wheels
ABEC 7 Bearings w/ Spacers

L: 34.00" W: 9.00" WB: 15.625"
Complete: ABR-COM-3574



OSO FOUNDATION

Available SU/FA24

Paris Street 169mm Trucks
Arbor Bogart 61mm 78A Wheels
ABEC 7 Bearings w/ Spacers

L: 30.00" W: 10.00" WB: 15.50"
Complete: ABR-COM-3575



PILSNER FOUNDATION

Available SU/FA24

Paris Street 129mm Trucks
Arbor Bogart 61mm 78A Wheels
ABEC 7 Bearings w/ Spacers

L: 28.75" W: 8.25" WB: 15.25"
Complete: ABR-COM-3576



POCKET ROCKET FOUNDATION

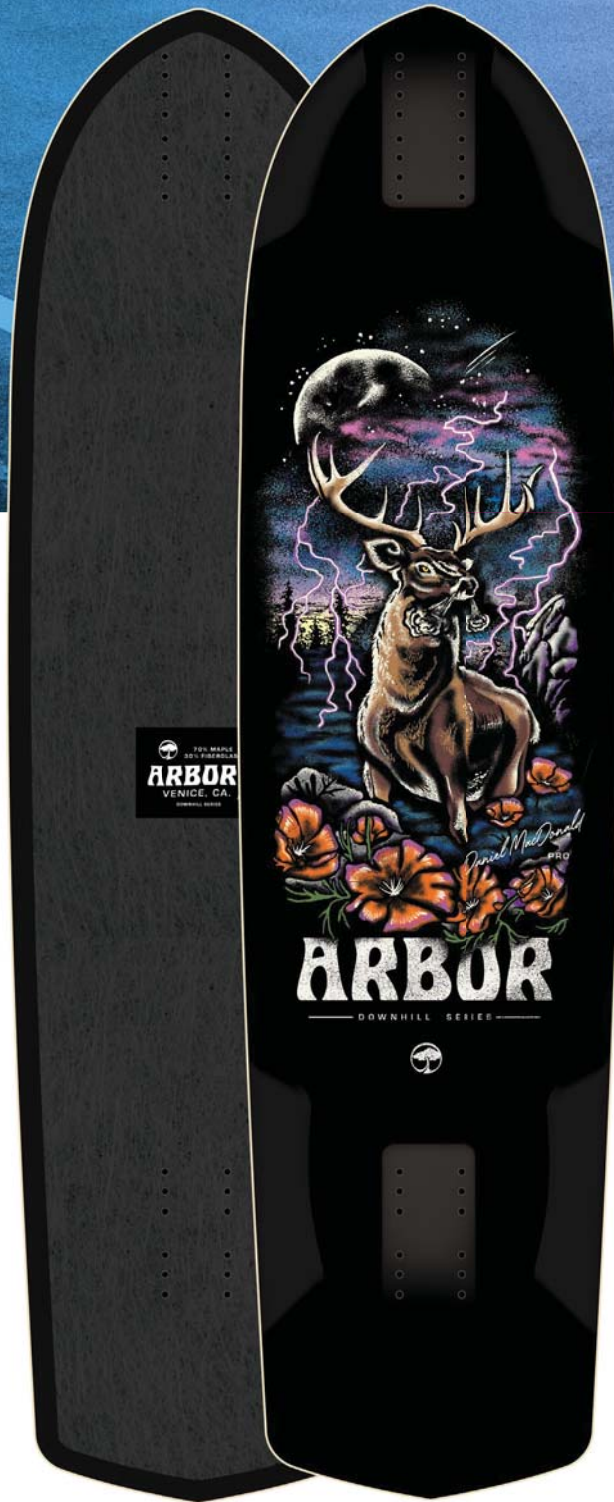
Available SU/FA24

Paris Street 108mm Trucks
Arbor Bogart 61mm 78A Wheels
ABEC 7 Bearings w/ Spacers

L: 27.00" W: 7.75" WB: 14.00"
Complete: ABR-COM-3577

Downhill Series

New Graphics & New Model

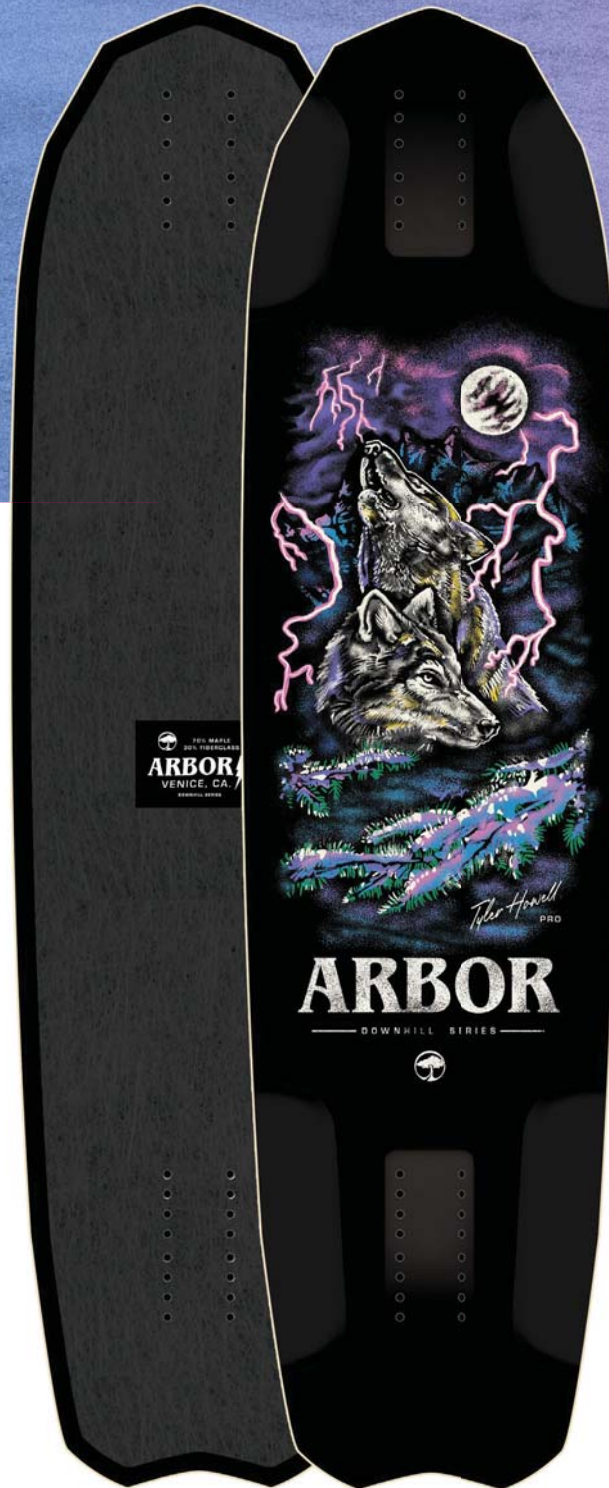


DANIEL MACDONALD PRO DOWNHILL

Available SU/FA24

L: 38.25" W: 9.75" WB: 25.00 - 27.50"

Deck: ABR-SKD-0194

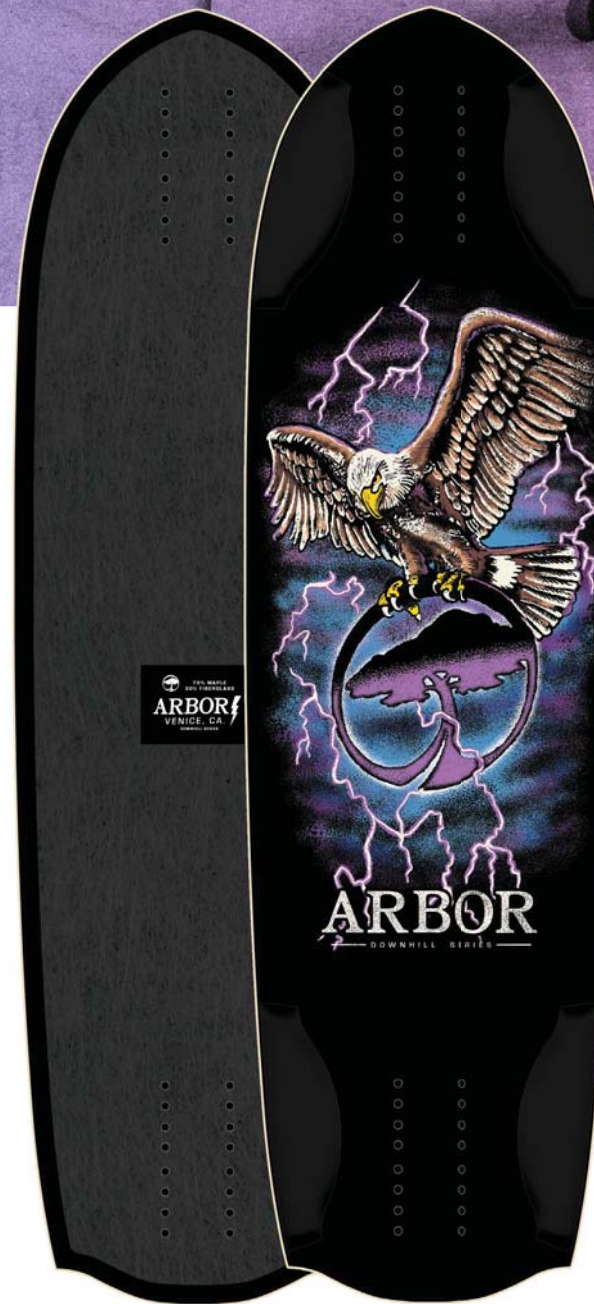


TYLER HOWELL PRO DOWNHILL

Available SU/FA24

L: 38.00" W: 9.625" WB: 24.375 - 27.125"

Deck: ABR-SKD-0195



HIGH VOLTAGE DOWNHILL

Available SP24

L: 32.00" W: 9.00" WB: 21.00-24.00"

Deck: ABR-SKD-0183

Canadian Maple with Triaxial Fiberglass

Classic downhill shapes with modern construction celebrating the unique intersection of speed, style, and environment that is downhill skateboarding.

VENICE COLLECTION

New Graphics

Sustainable Canadian Maple

The Venice Collection pulls together some of our most successful mid length and mini cruiser shapes, into a collection that highlights the art that we see coming out of the brand's home town today. From the boardwalk, to hundred of hidden home studios, to our legendary tattoo parlors, the Venice art community has always played a role in the ongoing evolution of graphic design trends. The new Venice Collection pays homage to this heritage, bringing new ideas on light, color, message, symbolism, and geometry to our line.



SIZZLER VENICE

Available SU/FA24

Arbor Branded HBP Truck 5.75"
Arbor Bogart 61mm 78A Wheels
ABEC 7 Bearings w/ Spacers

L: 30.50" W: 8.625" WB: 17.00"
Complete: ABR-COM-3569



PILSNER VENICE

Available SU/FA24

Arbor Branded HBP Truck 5.0"
Arbor Bogart 61mm 78A Wheels
ABEC 7 Bearings w/ Spacers

L: 28.75" W: 8.25" WB: 15.25"
Complete: ABR-COM-3570



POCKET ROCKET VENICE

Available SU/FA24

Arbor Branded HBP Truck 4.25"
Arbor Bogart 61mm 78A Wheels
ABEC 7 Bearings w/ Spacers

L: 27.00" W: 7.75" WB: 14.00"
Complete: ABR-COM-3571

Sustainable Canadian Maple

The Micron Collection expands Arbor mini cruisers range with three new micro shapes that were specifically designed to blend performance, portability, and sustainability. Inspired by 70's surfboard design, the new shapes have a retro vibe, while delivering modern cruiser performance. As skateboarding continues to move away from plastic, these zippy little gems are made, as always, with sustainably sourced wood for a fun, nimble, socially responsible ride.

Micron Collection



HAWKSHAW MICRON

Available Now

Arbor Branded HBP Truck 4.25"
Arbor Bogart 61mm 78A Wheels
ABEC 7 Bearings w/ Spacers

L: 29.00" W: 7.25" WB: 19.25"
Complete: ABR-COM-3535



PIVOT MICRON

Available Now

Arbor Branded HBP Truck 4.25"
Arbor Bogart 61mm 78A Wheels
ABEC 7 Bearings w/ Spacers

L: 26.00" W: 7.50" WB: 15.00"
Complete: ABR-COM-3536

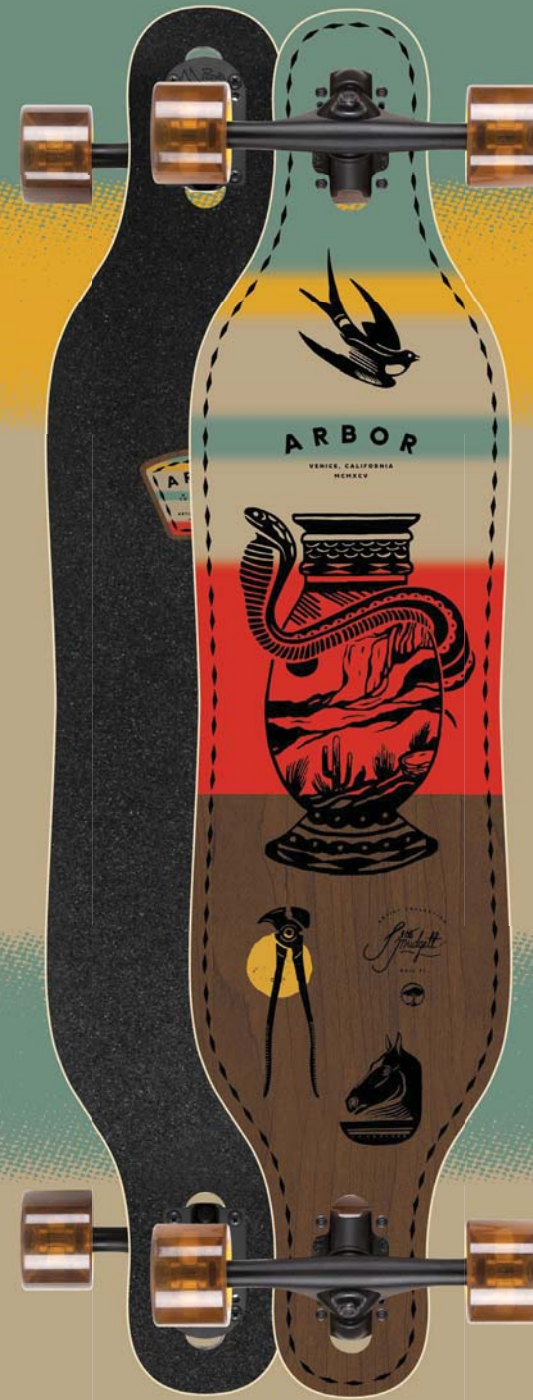


BOGART MICRON

Available Now

Arbor Branded HBP Truck 3.5"
Arbor Bogart 61mm 78A Wheels
ABEC 7 Bearings w/ Spacers

L: 23.75" W: 6.75" WB: 14.00"
Complete: ABR-COM-3537



AXIS 37 ARTIST

Available Now

Paris Reverse 50° 180mm Trucks
Arbor Outlook 69mm 78A Wheels
ABEC 7 Bearings w/ Spacers

L: 37.00" W: 8.50" WB: 27.75"
Complete: ABR-COM-3555



FISH ARTIST

Available Now

Paris Reverse 50° 150mm Trucks
Arbor Mosh 65mm 78A Wheels
ABEC 7 Bearings w/ Spacers

L: 37.00" W: 8.50" WB: 26.00"
Complete: ABR-COM-3556



SIZZLER ARTIST

Available Now

Paris Street 149mm Trucks
Arbor Bogart 61mm 78A Wheels
ABEC 7 Bearings w/ Spacers

L: 30.50" W: 8.625" WB: 17.00"
Complete: ABR-COM-3557



PILSNER ARTIST

Available Now

Paris Street 129mm Trucks
Arbor Bogart 61mm 78A Wheels
ABEC 7 Bearings w/ Spacers

L: 28.75" W: 8.25" WB: 15.25"
Complete: ABR-COM-3558



POCKET ROCKET ARTIST

Available Now

Paris Street 108mm Trucks
Arbor Bogart 61mm 78A Wheels
ABEC 7 Bearings w/ Spacers

L: 27.00" W: 7.75" WB: 14.00"
Complete: ABR-COM-3559

ARTIST COLLECTION

Jess Mudgett

Sustainable Canadian Maple



Artist: Jess Mudgett

The Colorado native, Portland Oregon nomad, Wyoming transplant has a bold presence that seemingly borrows influence from everything from nature and native culture to Old West homage and streetwear. A truly unique and bold styling that resembles flash tattoo art but has extra attention to detail that makes it Mudgett.

Solstice Collection



Sustainable Canadian Maple & Palisander Wood Topsheet

Curated by the women of the Arbor Collective, the new Solstice Collection highlights a beautiful new look with the same beautiful mission. We are proud to announce that a portion of every board sold will be donated to Boarding for Breast Cancer.



AXIS 37 SOLSTICE

Available Now

Paris Reverse 50° 180mm Trucks
Arbor Outlook 69mm 78A Wheels
ABEC 7 Bearings w/ Spacers

L: 37.00" W: 8.50" WB: 27.75"
Complete: ABR-COM-0128



FISH SOLSTICE

Available Now

Paris Reverse 50° 150mm Trucks
Arbor Mosh 65mm 78A Wheels
ABEC 7 Bearings w/ Spacers

L: 37.00" W: 8.50" WB: 26.00"
Complete: ABR-COM-0129



CUCHARON SOLSTICE

Available Now

Paris Street 149mm Trucks
Arbor Shakedown 58mm 80A Wheels
ABEC 7 Bearings w/ Spacers

L: 32.375" W: 8.75" WB: 14.75"
Complete: ABR-COM-0130



PILSNER SOLSTICE

Available Now

Paris Street 129mm Trucks
Arbor Bogart 61mm 78A Wheels
ABEC 7 Bearings w/ Spacers

L: 28.75" W: 8.25" WB: 15.25"
Complete: ABR-COM-0131

Bamboo Collection

EL ROSE



London-based tattoo artist, El Rose, balances detailed pen & ink design utilizing bold use of light and dark spaces to highlight the cycle of life and the power of the natural world.



AXIS 40 BAMBOO

Available Now

Paris Reverse 50°
180mm Trucks
Arbor Outlook
69mm 78A Wheels
ABEC 7 Bearings
w/ Spacers

L: 40.00" W: 8.75"
WB: 30.75"
Complete: ABR-COM-0116
Deck: ABR-SKD-0103



FISH BAMBOO

Available Now

Paris Reverse 50°
150mm Trucks
Arbor Mosh
65mm 78A Wheels
ABEC 7 Bearings
w/ Spacers

L: 37.00" W: 8.50"
WB: 26.00"
Complete: ABR-COM-0117
Deck: ABR-SKD-0104



ZEPPELIN BAMBOO

Available Now

Paris Reverse 50°
180mm Trucks
Arbor Mosh
65mm 78A Wheels
ABEC 7 Bearings
w/ Spacers

L: 32.00" W: 9.00"
WB: 23.00"
Complete: ABR-COM-0118
Deck: ABR-SKD-0105



SIZZLER BAMBOO

Available Now

Paris Street
149mm Trucks
Arbor Bogart
61mm 78A Wheels
ABEC 7 Bearings
w/ Spacers

L: 30.50" W: 8.625"
WB: 17.00"
Complete: ABR-COM-0119
Deck: ABR-SKD-0106



PILSNER BAMBOO

Available Now

Paris Street
129mm Trucks
Arbor Bogart
61mm 78A Wheels
ABEC 7 Bearings
w/ Spacers

L: 28.75" W: 8.25"
WB: 15.25"
Complete: ABR-COM-0120
Deck: ABR-SKD-0107



POCKET ROCKET BAMBOO

Available Now

Paris Street
108mm Trucks
Arbor Bogart
61mm 78A Wheels
ABEC 7 Bearings
w/ Spacers

L: 27.00" W: 7.75"
WB: 14.00"
Complete: ABR-COM-0121
Deck: ABR-SKD-0108

Sustainable Canadian Maple & Carbonized Bamboo Topsheet

Arbor adopted bamboo early on, and each year we highlight its connection to culture, sustainable design, and performance.



Easyrider Series

Designed to give a wide range of performance when cruising and carving for a fun, around-town ride.



Outlook

69mm | CP 42.0mm | OS 0.0mm | 78A

Ghost White: SKU Number
 Ghost Black: SKU Number
 Amber: SKU Number
 Vintage Red: SKU Number



Mosh

65mm | CP 35.0mm | OS 0.0mm | 78A

Ghost White: SKU Number
 Ghost Black: SKU Number
 Amber: SKU Number
 Vintage Red: SKU Number



Bogart

61mm | CP 36.0mm | OS 2.5mm | 78A

Ghost White: SKU Number
 Ghost Black: SKU Number
 Amber: SKU Number
 Vintage Red: SKU Number

Shakedown Series

Built to hold up to the endless demands of hybrid skaters; corner store trips, park, flatground, or tricks at speed.



Shakedown

58mm | CP 25.0mm | OS 0.0mm | 80A

Our Shakedown wheel is a centerset hybrid wheel that's built for all types of skating. Coming in at 58mm tall, these donuts are small enough to get technical yet soft enough that you can still put your weight into it when carving. You're free to ride the park or slide around a mountain switchback.

Ghost White: SKU Number
 Ghost Black: SKU Number
 Amber: SKU Number
 Vintage Red: SKU Number

Signature Series

Team tested on mountain grades, neighborhood steeps, and city streets, our Signature Series uses high performance urethanes, exclusive shapes, and fiberglass reinforced cores for enhanced control, roll speed, and durability in all conditions.



SIGNATURE CORES

Built with recycled materials and fiberglass reinforcement, our cores provide enhanced performance while utilizing materials that would have been tossed into a landfill.

Groovetube Core

A wide "tube" profile holds the urethane's shape under demanding conditions to offer improved grip, roll speed, slide characteristics, and durability.

Revolver Core

Delivers maximum support for larger wheels and helps provide the high levels of grip, speed, and slide control needed for the most challenging terrain.



SIGNATURE FORMULAS

Hand-picked by our pro riders, our Signature Series offers a versatile selection of urethane formulas, creating finely tuned performance options for any rider on any terrain.

Apex Formula

Built for the mountains, ultra high-rebound urethane makes this formula the fastest and grippiest in our line.

Nitro Formula

Balancing slip and grip, this formula offers effortless slides while providing the control needed for higher speeds and steeper corners.

Slicks Formula

An easy sliding formula built to generate huge smiles as it pastesthane lines across all your favorite spots.



HIGHLANDS TYLER HOWELL

Highlands - Tyler Howell
 75mm | CP 60.0mm | OS 2.0mm | 75A
 Apex Formula | Revolver Core
 Sharp Lip

White: SKU Number
 Black: SKU Number



SUMMIT DANIEL MACDONALD

Summit - Daniel Macdonald
 71mm | CP 56.0mm | OS 2.5mm | 78A
 Apex Formula | Groovetube Core
 Sharp Lip

White: SKU Number
 Black: SKU Number



VICE DANIEL MACDONALD

Vice - Daniel Macdonald
 69mm | CP 35.5mm | OS 2.0mm | 78A
 Nitro Formula | Groovetube Core
 Round Lip | Stone Ground

White: SKU Number
 Black: SKU Number



VICE TYLER HOWELL

Vice - Tyler Howell
 69mm | CP 35.5mm | OS 2.0mm | 75A
 Apex Formula | Groovetube Core
 Round Lip | Stone Ground

White: SKU Number
 Black: SKU Number



SPUD AXEL SERRAT

Spud - Axel Serrat
 64mm | CP 36.5mm | OS 0.0mm | 82A
 Slicks Formula | Groovetube Core
 Round Lip | Stone Ground

White: SKU Number
 Black: SKU Number



SUAVE AXEL SERRAT

Suave - Axel Serrat
 58mm | CP 32.0mm | OS 0.0mm | 80A
 Slicks Formula | Groovetube Core
 Round Lip | Stone Ground

White: SKU Number
 Black: SKU Number



Certified Arbor Completes are fully assembled skateboards built using select, high-end components that complement the performance and geometry of each of our shapes. Each package takes into consideration: the angle, geometry, and size of the trucks; the size, shape, and durometer of the wheels; the hardness and rebound of the bushings; the placement of wheel wells; and all aspects of shape. When buying an Arbor, look for this symbol, and insist that your complete comes with components approved by Arbor Skateboards.

Street - Traditional double-kick shapes for street and park performance.

Heritage Shapes - Hybrids that can be built as cruisers or for park / pool / freeride performance.

Mini Cruisers - Stashable kick-tail shapes for tight turns and fun in-town skating. (27.0" - 29.0")

Mid Cruisers - Mid-length shapes for slashing banks and cross-town missions. (30.0" - 32.0")

Long Cruisers - Longer shapes for carving, stability at speed, and daily commutes. (33.0" +)

Drop Throughs - Performance shapes for deeper carving, longer distance, and mellow freeriding.

Downhill - Team designed shapes for freeriding, stability at speed, and advanced cornering.

Street



LOGO 7.75

LOGO 8.0



INKED 8.0



LOGO 8.25



AMELIA PRO NEURON 8.25



INKED 8.25



ACE PRO BALANCE 8.375



LOGO 8.5



INKED 8.5



AMELIA PRO NEURON 8.5



GREYSON PRO FACES 8.625



ACE PRO BALANCE 8.75



GREYSON PRO FACES 8.875

Heritage Shapes



ACE REARVIEW



OSO TRIPPED



MARTILLO TRIPPED



GREYSON PORTAL HOPPER



CUCHARON SOLSTICE



SHAKEDOWN 34 DEATHROLL



SHAKEDOWN 37 DEATHROLL

Surfskates



TYLER WARREN SURFSKATE



SURF ROCKET SURFSKATE



BLACK ROSE SURFSKATE



RYAN LOVELACE SURFSKATE



FAT FISH SURFSKATE



JORDAN BRAZIE SURFSKATE



DAILY DRIVER SURFSKATE

Mini Cruisers



BOGART MICRON



PIVOT MICRON



POCKET ROCKET BAMBOO



POCKET ROCKET ARTIST



POCKET ROCKET VENICE 2023



PILSNER VENICE 2023



PILSNER JESS MUDGETT



PILSNER SOLSTICE



PILSNER BAMBOO



HAWKSHAW MICRON

Mid Cruisers



SIZZLER VENICE 2023



SIZZLER GROUNDWELL



SIZZLER JESS MUDGETT



SIZZLER BAMBOO



RALLY GROUNDWELL

Long Cruisers



MISSION GROUNDWELL



FISH JESS MUDGETT



FISH GROUNDWELL



FISH BAMBOO



FISH SOLSTICE

Drop Throughs



ZEPPELIN BAMBOO



ZEPPELIN FLAGSHIP 2023



AXIS 37 JESS MUDGETT



AXIS 37 SOLSTICE



AXIS 37 FLAGSHIP 2023



AXIS 40 FLAGSHIP 2023



AXIS 40 BAMBOO

Downhill



HIGH VOLTAGE DOWNHILL



Certified Arbor Completes are fully assembled skateboards built using select, high-end components that complement the performance and geometry of each of our shapes. Each package takes into consideration: the angle, geometry, and size of the trucks; the size, shape, and durometer of the wheels; the hardness and rebound of the bushings; the placement of wheel wells; and all aspects of shape. When buying an Arbor, look for this symbol, and insist that your complete comes with components approved by Arbor Skateboards.

Street - Traditional double-kick shapes for street and park performance.

Heritage Shapes - Hybrids that can be built as cruisers or for park / pool / freeride performance.

Mini Cruisers - Stashable kick-tail shapes for tight turns and fun in-town skating. (27.0" - 29.0")

Mid Cruisers - Mid-length shapes for slashing banks and crosstown missions. (30.0" - 32.0")

Long Cruisers - Longer shapes for carving, stability at speed, and daily commutes. (33.0" +)

Drop Throughs - Performance shapes for deeper carving, longer distance, and mellow freeriding.

Downhill - Team designed shapes for freeriding, stability at speed, and advanced cornering.

Street



LOGO 7.75 LOGO 8.0 INKED 8.0 LOGO 8.25 AMELIA PRO NEURON 8.25 SHURIKEN PRO DRAGON FOO 8.25 INKED 8.25 ACE PRO DAYTRIPPER 8.375 LOGO 8.5 INKED 8.5 AMELIA PRO NEURON 8.5 SHURIKEN PRO DRAGON FOO 8.5 GREYSON PRO COLLAGE 8.625 ACE PRO DAYTRIPPER 8.75 GREYSON PRO COLLAGE 8.875

Heritage Shapes



ACE FIBONACCI OSO TRIPPED OSO SPELLBOUND OSO FOUNDATION MARTILLO TRIPPED MARTILLO SPELLBOUND GREYSON PORTAL HOPPER CUCHARON SPELLBOUND CUCHARON SOLSTICE PISTOLA SPELLBOUND



SHAKEDOWN 34 DEATHROLL SHAKEDOWN 34 SCORPION SHAKEDOWN 34 FOUNDATION SHAKEDOWN 37 DEATHROLL SHAKEDOWN 37 SCORPION

Surfskates



TYLER WARREN SURFSKATE SURF ROCKET SURFSKATE BLACK ROSE SURFSKATE RYAN LOVELACE SURFSKATE FAT FISH SURFSKATE

Mini Cruisers



JORDAN BRAZIE SURFSKATE DAILY DRIVER SURFSKATE BOGART MICRON PIVOT MICRON POCKET ROCKET BAMBOO POCKET ROCKET FOUNDATION POCKET ROCKET JESS MUDGETT POCKET ROCKET VENICE PILSNER FOUNDATION



PILSNER VENICE PILSNER JESS MUDGETT PILSNER SOLSTICE PILSNER BAMBOO HAWKSHAW MICRON

Mid Cruisers



SIZZLER VENICE SIZZLER GROUNDSWELL SIZZLER JESS MUDGETT SIZZLER BAMBOO RALLY GROUNDSWELL

Long Cruisers



BREACH FOUNDATION MISSION GROUNDSWELL FISH JESS MUDGETT FISH GROUNDSWELL FISH BAMBOO FISH SOLSTICE CROSS STEP FOUNDATION

Drop Throughs



ZEPPELIN BAMBOO ZEPPELIN FLAGSHIP 2023 AXIS 37 JESS MUDGETT AXIS 37 SOLSTICE AXIS 37 FLAGSHIP 2023 AXIS 40 FLAGSHIP 2023 AXIS 40 BAMBOO

Downhill



TYLER HOWELL PRO DOWNHILL DANIEL MACDONALD PRO DOWNHILL HIGH VOLTAGE DOWNHILL



Certified Arbor Completes are fully assembled skateboards built using select, high-end components that complement the performance and geometry of each of our shapes. Each package takes into consideration: the angle, geometry, and size of the trucks; the size, shape, and durometer of the wheels; the hardness and rebound of the bushings; the placement of wheel wells; and all aspects of shape. When buying an Arbor, look for this symbol, and insist that your complete comes with components approved by Arbor Skateboards.

Street - Traditional double-kick shapes for street and park performance.

Heritage Shapes - Hybrids that can be built as cruisers or for park / pool / freeride performance.

Mini Cruisers - Stashable kick-tail shapes for tight turns and fun in-town skating. (27.0" - 29.0")

Mid Cruisers - Mid-length shapes for slashing banks and cross-town missions. (30.0" - 32.0")

Long Cruisers - Longer shapes for carving, stability at speed, and daily commutes. (33.0" +)

Drop Throughs - Performance shapes for deeper carving, longer distance, and mellow freeriding.

Downhill - Team designed shapes for freeriding, stability at speed, and advanced cornering.

Seed



CHOMP 7.25 CHOMP 7.5

Street



LOGO 7.75 LOGO 8.0 DAISY 8.0 LOGO 8.25 DAISY 8.25 AMELIA PRO CERAMIKA 8.25 SHURIKEN PRO DRAGON FOO 8.25 ACE PRO VAGABOND 8.375 LOGO 8.5 DAISY 8.5 AMELIA PRO CERAMIKA 8.5 SHURIKEN PRO DRAGON FOO 8.5

Heritage Shapes



GREYSON PRO CHECKERS 8.625 ACE PRO VAGABOND 8.75 GREYSON PRO CHECKERS 8.875



ACE ORDER AND CHAOS OSO TRIPPED OSO SPELLBOUND OSO FOUNDATION MARTILLO TRIPPED MARTILLO SPELLBOUND GREYSON PORTAL HOPPER



CUCHARON SPELLBOUND CUCHARON SOLSTICE PISTOLA SPELLBOUND SHAKEDOWN 34 RATS SHAKEDOWN 34 SCORPION SHAKEDOWN 34 FOUNDATION SHAKEDOWN 37 SCORPION

Surfskates



TYLER WARREN SURFSKATE SURF ROCKET SURFSKATE BLACK ROSE SURFSKATE

Mini Cruisers



RYAN LOVELACE SURFSKATE FAT FISH SURFSKATE JORDAN BRAZIE SURFSKATE DAILY DRIVER SURFSKATE



BOGART MICRON PIVOT MICRON POCKET ROCKET BAMBOO POCKET ROCKET FOUNDATION POCKET ROCKET JESS MUDGETT POCKET ROCKET VENICE PILSNER FOUNDATION



PILSNER VENICE PILSNER JESS MUDGETT PILSNER SOLSTICE PILSNER BAMBOO HAWKSHAW MICRON

Mid Cruisers



SIZZLER VENICE SIZZLER GROUNDSWELL SIZZLER JESS MUDGETT SIZZLER BAMBOO RALLY GROUNDSWELL

Long Cruisers



BREACH FOUNDATION MISSION GROUNDSWELL FISH JESS MUDGETT FISH GROUNDSWELL FISH BAMBOO FISH SOLSTICE CROSS STEP FOUNDATION

Drop Throughs



ZEPPELIN BAMBOO AXIS 37 JESS MUDGETT AXIS 37 SOLSTICE AXIS 37 FLAGSHIP DROPCRUISER FLAGSHIP AXIS 40 FLAGSHIP AXIS 40 BAMBOO

Downhill



TYLER HOWELL PRO DOWNHILL DANIEL MACDONALD PRO DOWNHILL HIGH VOLTAGE DOWNHILL



Arbor Display Rack

Premium wood rack with laser etched Arbor branding. Holds up to 14 complete skateboards.



Point Of Purchase Products

Arbor Skateboards is dedicated to finding more ways to support our customers. Ask your rep or account manager about more point of purchase products & availability in your region.



Arbor Enamel Camping Mug

Capacity: 10oz/285ml



Assorted Arbor Posters



Assorted Arbor Stickers



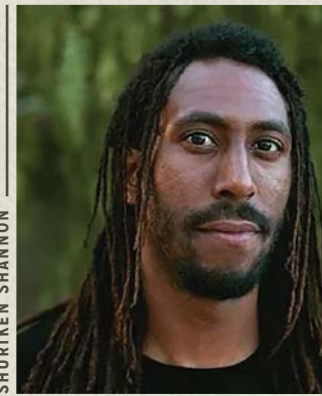
Arbor Floor Mat

Width: 29.50" | Length: 19.50"

Team



GREYSON FLETCHER



SHURIKEN SHANNON



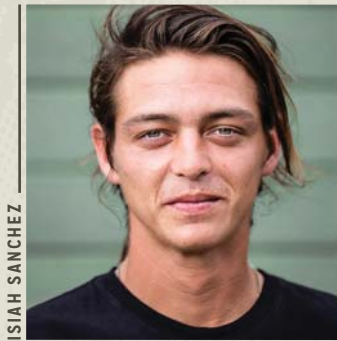
AMELIA BRODKA



ACE PELKA



JESSE ARROWOOD



ISIAH SANCHEZ



SEAN IMES

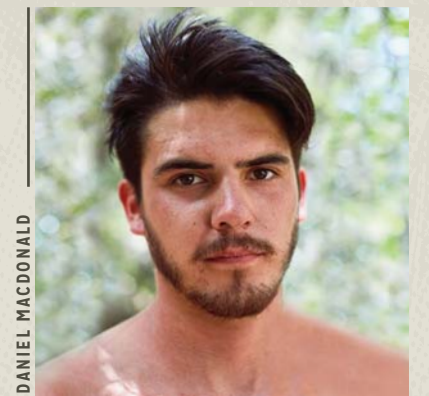
Downhill



TYLER HOWELL



AXEL SERRAT



DANIEL MACDONALD



JASMIJIN HANEGRAEF



LUIS PEREIRA



RYAN RICKER



2024

ARBORCOLLECTIVE.COM

102 WASHINGTON BLVD, VENICE, CA 90292 | 310.577.1120
SKATE_INFO@ARBORCOLLECTIVE.COM

UK/EU/GLOBAL:
EMAIL: SALES@SHINER.CO.UK
TELEPHONE: +44 (0)117 20 20 120

US:
EMAIL: SALES@SHINERLLC.COM
TELEPHONE: +1 310.577.1120