



# Mesa

Dist.

ACE  
TRUCKS MFG

PEPPER  
GRIPTAPE CO.

NEW  
SHIT!

SUMMER 2026

GUS GORDON  
ACE PILOT



# ACE AF1

ULTIMATE PERFORMANCE BEARINGS

DESIGNED TO MEET BEST-IN-CLASS STANDARDS WHILE MAXIMIZING AFFORDABILITY



BUILT TO THE HIGHEST INTERNATIONAL STANDARDS FOR SERIOUS DURABILITY. ENGINEERED FOR MAXIMUM SPEED AND A SMOOTH, CONSISTENT RIDE WITH NO COMPROMISES.

- PREMIUM-GRADE MATERIALS + PRECISION ENGINEERING - OUR HIGHEST-END, LONGEST-LASTING BEARING
- PRECISION-GROUND RACES FOR A SMOOTHER, QUIETER ROLL
- HIGH-STRENGTH BEARING CAGE FOR MAX LIFE
- DURABLE NON-CRIMP "SNAP-FIT" PLASTIC SHIELDS (EASY ON/OFF, SECURE FIT)
- DUAL-SHIELD CONSTRUCTION HELPS KEEP DIRT OUT + LUBE IN
- ACE PILOT TESTED AND APPROVED



POLISHED

ACE LIMITED  
**MYSTERY**



CONTACT  
YOUR SALES REP  
FOR MORE INFORMATION



MATTE BLACK

The **ACE AF1** is the strongest and longest lasting cast truck available. Our trucks are manufactured using our proprietary casting process, which produces a stronger and tighter grain structure within the aluminum.

KEY FEATURES:

- THE STRONGEST CAST TRUCK EVER MADE
- LASER ETCHED SIZING
- FACED HANGERS
- HAND POURED 96a PIVOT CUPS
- UNGRADED/NON-SLIP AXLE
- RE-THREADING AXLE NUTS
- REFINED BASEPLATE FOR ADDED STRENGTH
- HIGH GRADE TRUE T6 HEAT TREATED ALUMINUM

SIZE	AXLE WIDTH	BOARD FIT	HANGER WIDTH	HEIGHT	WEIGHT (OUNCES)	WEIGHT (GRAMS)
22	7.75"	7.25" - 8.00"	5.2" (132mm)	2.1" (53 MM)	12.925	366
33	8.00"	8.00" - 8.25"	5.4" (137mm)		13.371	379
44	8.25"	8.25" - 8.50"	5.6" (143mm)		13.666	387
55	8.50"	8.50" - 8.75"	5.8" (149mm)		13.981	396
60	8.75"	8.75" - 9.00"	6.1" (155mm)		14.287	405
66	9.00"	9.00" - 9.25"	6.4" (163mm)		14.531	412
77	9.5"	9.25" - 9.75"	6.9" (175mm)		15.062	427
80	10"	9.75" - ABOVE	7.4" (188mm)		15.593	434

# ECCE AF1

# INVERTED



MADE WITH  
**CLICK LOCK PRO**  
INVERTED KINGPIN LOCKING SYSTEM  
TECHNOLOGY

POLISHED



BASEPLATES ALSO SOLD SEPARATELY  
COMPATIBLE WITH ALL **ECCE AF1** HANGERS

## KEY AF1 FEATURES:

- THE STRONGEST CAST TRUCK EVER MADE
- LASER ETCHED SIZING
- FACED HANGERS
- HAND POURED 96a PIVOT CUPS
- RE-THREADING AXLE NUTS
- HIGH GRADE TRUE T6 HEAT TREATED ALUMINUM

## INVERTED FEATURES:

- **REVOLUTIONARY KINGPIN DESIGN**  
CHANNEL-LOCK GROOVES CLICK THE KINGPIN INTO PLACE  
CREATING OUR REVOLUTIONARY SLEEVE SYSTEM
- **MAXIMUM GRIND CLEARANCE**  
MAXIMUM GRIND CLEARANCE OF 15mm
- **STRONGEST AXLE EVER MADE**  
BUILD EXTRA TOUGH AND LIGHT AS A FEATHER
- **ALL NEW BASEPLATE**  
DOMED OUT RECESSES RESULTING IN LIGHTER WEIGHT  
AND ADDED STRENGTH  
\*COMPATIBLE WITH ALL AF1 HANGERS

SIZE	AXLE WIDTH	BOARD FIT	HANGER WIDTH	HEIGHT
22 INVERTED	7.75"	7.25" - 8.00"	5.2" (132mm)	2.1" (53 MM)
33 INVERTED	8.00"	8.00" - 8.25"	5.4" (137mm)	
44 INVERTED	8.25"	8.25" - 8.50"	5.6" (143mm)	
55 INVERTED	8.50"	8.50" - 8.75"	5.8" (149mm)	
60 INVERTED	8.75"	8.75" - 9.00"	6.1" (155mm)	
66 INVERTED	9.00"	9.00" - 9.25"	6.4" (163mm)	
77 INVERTED	9.5"	9.25" - 9.75"	6.9" (175mm)	
80 INVERTED	10"	9.75" - ABOVE	7.4" (188mm)	



POLISHED

The **AF1** is the strongest and longest lasting cast truck available. Our trucks are manufactured using our proprietary casting process, which produces a stronger and tighter grain structure within the aluminum.

**KEY FEATURES:**

- THE STRONGEST CAST TRUCK EVER MADE
- LASER ETCHED SIZING
- FACED HANGERS
- HAND POURED 96a PIVOT CUPS
- UNGRADED/NON-SLIP AXLE
- RE-THREADING AXLE NUTS
- REFINED BASEPLATE FOR ADDED STRENGTH
- HIGH GRADE TRUE T6 HEAT TREATED ALUMINUM

**HOLLOW FEATURES:**

- 53mm RIDE HEIGHT
- HOLLOW KINGPIN
- HOLLOW AXLE SCM440 ALLOY STEEL
- 360g 8.6% LIGHTER THAN STD. AF1

SIZE	AXLE WIDTH	BOARD FIT	HANGER WIDTH	HEIGHT	WEIGHT (OUNCES)	WEIGHT (GRAMS)
22 HOLLOW	7.75"	7.25" - 8.00"	5.2" (132mm)	2.1" (53 MM)	12.925	366
33 HOLLOW	8.00"	8.00" - 8.25"	5.4" (137mm)		13.371	379
44 HOLLOW	8.25"	8.25" - 8.50"	5.6" (143mm)		13.666	387
55 HOLLOW	8.50"	8.50" - 8.75"	5.8" (149mm)		13.981	396
60 HOLLOW	8.75"	8.75" - 9.00"	6.1" (155mm)		14.287	405
66 HOLLOW	9.00"	9.00" - 9.25"	6.4" (163mm)		14.531	412
77 HOLLOW	9.5"	9.25" - 9.75"	6.9" (175mm)		15.062	427
80 HOLLOW	10"	9.75" - ABOVE	7.4" (188mm)		15.593	434



## POLISHED

The **ECC AF1** is the strongest and longest lasting cast truck available. Our trucks are manufactured using our proprietary casting process, which produces a stronger and tighter grain structure within the aluminum.

## KEY AF1 FEATURES:

- THE STRONGEST CAST TRUCK EVER MADE
- LASER ETCHED SIZING
- FACED HANGERS
- HAND POURED 96a PIVOT CUPS
- UNGRADED/NON-SLIP AXLE
- RE-THREADING AXLE NUTS
- REFINED BASEPLATE FOR ADDED STRENGTH
- HIGH GRADE TRUE T6 HEAT TREATED ALUMINUM

## LOW FEATURES:

- 49mm RIDE HEIGHT
- HOLLOW KINGPIN & AXLE
- LOWERED BASEPLATE
- NEW CROSS-BEAM PINCH DESIGN
- 33g LIGHTER THAN STANDARD AF1

SIZE	AXLE WIDTH	BOARD FIT	HANGER WIDTH	HEIGHT	WEIGHT (OUNCES)	WEIGHT (GRAMS)
<b>33</b> LOW	8.00"	8.00" - 8.25"	5.4" (137mm)	1.93" (49 MM)	12.716	361
<b>44</b> LOW	8.25"	8.25" - 8.50"	5.6" (143mm)		13.033	370
<b>55</b> LOW	8.50"	8.50" - 8.75"	5.8" (149mm)		13.351	379



**POLISHED**



**MATTE BLACK**

AVAILABLE SIZES: 33,44,55

A true Classic. 7071 Aluminum and 3056 steel axles provide performance that is tried and true. Tapered hanger ends and oversized axles allow for better bearing performance. This is where we began and our evolution will continue with the Classic model line that delivers unmatched turn and grind performance at a price point all can enjoy.

- Top Bushing: 12mm tall I 91a hardness
- Bottom Bushing: Bottom 14mm tall I 86a hardness
- Machine-faced hanger ends for precise bearing contact

SIZE	AXLE WIDTH	BOARD FIT	HEIGHT	WEIGHT (OUNCES)	WEIGHT (GRAMS)
00	6.5"	6.5" - UNDER	2.1" (53 MM)	11.728	332.5
11	7.0"	7.0" - 7.5"		12.134	344
22	7.6"	7.5" - 7.875"		12.398	351.5
33	8.0"	7.875" - 8.25"		12.963	367.5
44	8.35"	8.25" - 8.75"		13.986	396.5
55	9.0"	8.75" - 9.125"		14.532	412
66	9.35"	9.125" - 9.75"		14.797	419.5



# ACCESSORIES

## HARDWARE



ALLEN OR PHILLIPS

7/8" 1" 1 1/4"

## WAX



MICRO

5" BIG BLOCK



RED



CLEAR

## PIVOT CUPS



CLASSIC OR AF1

HAND POURED  
95A URETHANE

HAND POURED  
95A URETHANE

## BUSHINGS



COMPATIBLE WITH  
AF1 OR CLASSICS

91c STOCK MEDIUM 94c HARD 91c LOW MEDIUM 94c LOW HARD 99c EXTRA HARD

## RE-THREADERS



AXLE AND KINGPIN DIES

CARABINER INCLUDED

## SHIMS & PADS



1/16"

RUBBER SHOCK  
SET OF 2

1/8"

PLASTIC SHIM  
SET OF 2

## HOLLOW HARDWARE



WITH MICRO-GRIP TECHNOLOGY

7/8" 1" 1 1/4"

## BEARINGS



HIGH PERFORMANCE  
BEARINGS

- ENGINEERED FOR LONG LASTING DURABILITY
- IDEAL TOLERANCE FOR ULTRA SMOOTH RIDE
- RACE READY OIL LUBRICANT
- REMOVABLE RUBBER SHIELD AND CROWN
- CONSTRUCTED TO REDUCE DIRT AND GRIME BUILD UP



# ACCESSORIES

## INVERTED TOOL ADAPTER



More torque and full revolutions  
without hanger interference

Fits inside most standard 3/8" skate tools

## INVERTED BASEPLATE



Compatible with all AF1 hangers



## AF1 SKATE TOOL



COMPACT MODE



BUILT-IN KINGPIN  
RE-THREADER DIE



BUILT-IN AXLE  
RE-THREADER DIE



COLLAPSED  
MODE

## INVERTED BUSHINGS



**STANDARD**  
Includes 94a Top Bushing, 96a Bottom,  
and recessed washer set

NEW  
SHIT!



**HARD**  
Includes 94a Top Bushing, 94a Bottom,  
and recessed washer set

NEW  
SHIT!



**EXTRA HARD**  
Includes 99a Top Bushing, 99a Bottom,  
and recessed washer set



## CLASSIC SKATE TOOL



COLLAPSED MODE



UNASSEMBLED

# APPAREL

100% PREMIUM COTTON UNLESS OTHERWISE NOTED / SOFT HAND INKS / UNISEX SIZES: S - XXL

NEW  
SHIT!



2007 WHITE

NEW  
SHIT!



2007 PULLOVER NAVY

NEW  
SHIT!



MAGAZINE BLACK

NEW  
SHIT!



SKATE CITY WHITE



MEME LONG SLEEVE BLACK



COMBUST POCKET TEE NAVY

## HATS & BEANIES

**NEW  
SHIT!**

### COMBUST



BLACK

EMBROIDERED / BRUSHED TWILL  
SNAPBACK / ONE SIZE FITS ALL

**NEW  
SHIT!**

### FINISH



BLACK

EMBROIDERED / BRUSHED TWILL  
SNAPBACK / ONE SIZE FITS ALL

**NEW  
SHIT!**

### PARTS & SERVICE



BLACK

ACRYLIC / EMBROIDERED JUMBO PATCH  
ONE SIZE FITS ALL

**NEW  
SHIT!**

### RINGS MFG



NAVY

ACRYLIC / EMBROIDERED PATCH / ONE SIZE FITS ALL

**NEW  
SHIT!**

### RINGS 5 PANEL



NAVY

EMBROIDERED / BRUSHED TWILL  
SNAPBACK / ONE SIZE FITS ALL

## STICKERS, PINS & PATCHES

3.5" COMBUST  
STICKER



PACKS OF 20

4" MEME  
STICKER



PACKS OF 20

3" RINGS  
STICKER



PACKS OF 20

3" SEAL  
STICKER



PACKS OF 20

1.5" TRUCK PIN  
SILVER

DIE STRUCK LAPEL PIN



4" PARTS & SERVICE  
EMBROIDERED PATCH



3.5" SPEEDWAY  
EMBROIDERED PATCH



3.75" SUNRISE  
EMBROIDERED PATCH



4" TIME CLOCK  
EMBROIDERED PATCH



1.5" TRUCK PIN  
GOLD

DIE STRUCK LAPEL PIN



**NEW  
SHIT!**



**11**

7"

**22**

7.6"

**33**

8"

**44**

8.38"

# CLASSIC BUNDLES

- **ACE CLASSIC TRUCKS**

Sizes: 11, 22, 33, 44

- **CONICAL WHEELS**

Options: 52mm 95a, 54mm 95a

- **ABEC-5 BEARINGS**

- **PHILLIPS HARDWARE**



## SIZE CHART DISPLAY CLING

### ACE SIZE CHART

AF1		CLASSIC	
MODEL SIZE	HANGER (MM) BOARD FIT (INCH)	MODEL SIZE	HANGER (MM) BOARD FIT (INCH)
22	132MM 7.75"	00	101MM 6.5"
33	137MM 8.0"	11	114MM 7"
44	143MM 8.25"	22	126MM 7.6"
55	149MM 8.5"	33	136MM 8"
60	155MM 8.75"	44	146MM 8.38"
66	163MM 9.0"	55	151MM 8.625"
77	175MM 9.5"	66	166MM 9"
80	183MM 10"		



TO LEARN MORE ABOUT  
ACE TRUCKS VISIT:  
[ACE.COM](http://ACE.COM)  
OR CALL 1-800-851-1144  
© 2014 ACE TRUCKS MFG. ALL RIGHTS RESERVED.

#### AF1 KEY FEATURES

STRONGEST CAST TRUCK ON EARTH • PERFECT FIT SLING LASERED ON AXLE  
UNPARALLELED TURNING & PERFORMANCE • ICE-CHILLING AXLE AUTO BUILT IN  
MOST SIZES AVAILABLE IN LOW OR HOLLOW

4.25" x 9"  
CLEAR VINYL  
WINDOW/DISPLAY CLING

## AUTHORIZED DEALER STICKER



5.5"  
DOUBLE SIDED PRINT  
GOLD FOIL

## RONNIE SANDOVAL WINDOW CLING



8" x 9"  
CLEAR VINYL  
WINDOW/DISPLAY CLING

# PEPPER

GRIPTAPE CO.









**PORTAL**  
**G5 BLACK**  
9" X 33.5"



T.O.M. K&N&G&L&O/



**PORTAL TEE**  
PREMIUM  
100% COTTON  
SOFT HAND INKS  
SIZES: SMALL - XXL



**PORTAL HOODIE**  
PREMIUM  
10 OZ. MID WEIGHT  
COTTON.POLY  
SOFT HAND INKS  
SIZES: SMALL - XXL

**PORTAL  
FLASHLIGHT**  
KEYCHAIN FLASHLIGHT







## G5 GALAXY

**GALAXY EFFECT**  
GOLD FLAKES

**EXCLUSIVE FORMULA**  
OPTIMAL BOARD FEEL

**EXTRA LENGTH**  
9" X 33.5"

**PERFORATED**

**AVAILABLE IN**  
SHEETS / ROLLS



## G5 BLACK

**G5 EXCLUSIVE FORMULA**  
OPTIMAL BOARD FEEL

**EXTRA LENGTH**  
9" X 33.5"  
10.5" X 33.5"

**PERFORATED**

**AVAILABLE IN**  
SHEETS / ROLLS



## XG GRIP

**EXTRA GRIT**  
LONG LASTING

**EXCLUSIVE FORMULA**  
OPTIMAL BOARD FEEL  
WITH ADDED CONTROL

**EXTRA LENGTH**  
9" X 33.5"

**PERFORATED**

**AVAILABLE IN**  
SHEETS



## SALT (CLEAR)

**EXCLUSIVE**  
**CLEAR FORMULA**  
OPTIMAL BOARD FEEL

**EXTRA LENGTH**  
10.5" X 33.5"

**PERFORATED**

**AVAILABLE IN**  
SHEETS



**LOGO**

**G5 EXCLUSIVE FORMULA**  
OPTIMAL BOARD FEEL

**EXTRA LENGTH**  
9" X 33.5"

**PERFORATED**  
**AVAILABLE IN**  
**SHEETS / ROLLS**

# G5 ROLLS

**MOST VALUE IN PER SHEET COST**  
EQUAL TO 2 BONUS SHEETS AS COMPARED TO A 20 PACK



**G5 BLACK**

**9" WIDE X 60' LONG**  
**10.5" WIDE X 60' LONG**  
**12" WIDE X 60' LONG**



**G5 GALAXY**

**9" WIDE X 60' LONG**



**XG GRIP**

**9" WIDE X 60' LONG**



**LOGO TEE (WHITE LOGO)**

PREMIUM / 100% COTTON / SOFT HAND INKS  
SIZES: SMALL - XXL



**LOGO TEE (BLACK LOGO)**

PREMIUM / 100% COTTON / SOFT HAND INKS  
SIZES: SMALL - XXL



**POCKET TEE**

PREMIUM / 100% COTTON / SOFT HAND INKS  
SIZES: SMALL - XXL



**PULLOVER HOODIE**

10 oz. MID WEIGHT / COTTON/POLY / EMBROIDERED  
SIZES: SMALL - XXL



**CASHMERE BEANIE**

PREMIUM CASHMERE / EMBROIDERED WOVEN LABEL  
SIZES: ONE SIZE FITS ALL



**LOGO 5 PANEL HAT**

BRUSHED TWILL / SNAPBACK / EMBROIDERED  
SIZES: ONE SIZE FITS ALL



KEEP YOUR GRIP TAPE LOOKING  
CLEAN AND FEELING FRESH WITH  
ALL NEW PEPPER BLACK GRIP GUM.  
A COMPACT, AFFORDABLE CLEANER  
THAT REMOVES DUST AND GRIME  
WITHOUT LEAVING STREAKS.

SMALLER THAN TRADITIONAL BARS,  
IT'S EASIER TO HANDLE AND STASH.  
USE TO LIFT DIRT, DUST, AND DEBRIS  
FROM YOUR GRIP EXTENDING ITS  
LIFE.

# GRIP GUM



NEW EXCLUSIVE FORMULA  
OPTIMAL BOARD FEEL

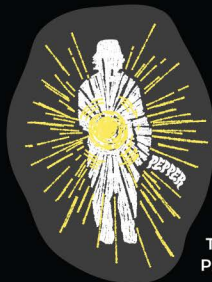
SIZE:  
STANDARD AT 9" X 33.5"



# STICKERS



PEPPER WHITE/CLEAR - 5"  
PACK OF 20



TOM K - 5"  
PACK OF 20



PEPPER BLACK/CLEAR - 5"  
PACK OF 20



PORTAL - 5"  
PACK OF 20



MESA DISTRIBUTION NORTH AMERICA  
10591 HUMBOLT STREET #B, LOS ALAMITOS, CA 90720

**BRIAN BROWN** - [BBROWN@MESADISTRIBUTION.COM](mailto:BBROWN@MESADISTRIBUTION.COM)

**ANDY OWENS** - [ANDY@MESADISTRIBUTION.COM](mailto:ANDY@MESADISTRIBUTION.COM)

**MIKE VAVAK** - [MIKE@MESADISTRIBUTION.COM](mailto:MIKE@MESADISTRIBUTION.COM)

**GENERAL INQUIRIES** - [SALES@MESADISTRIBUTION.COM](mailto:SALES@MESADISTRIBUTION.COM)



MESA DISTRIBUTION EUROPE  
TEODOR BONAPLATA 3, BARCELONA, SPAIN 08004

**SPAIN** - MIGUEL GIRONA - [GIRONA.MIGUEL@GMAIL.COM](mailto:GIRONA.MIGUEL@GMAIL.COM)

**FRANCE** - JÉRÔME VALETTE - [JEROME@AGENCENCORE.COM](mailto:JEROME@AGENCENCORE.COM)

**GENERAL INQUIRIES** - MARCOS GÓMEZ - [GOMEZ@MESADISTRIBUTION.COM](mailto:GOMEZ@MESADISTRIBUTION.COM)



MESA DISTRIBUTION BRAZIL  
RUA THEODORO LOCKER, 821 - 08 C CIDADE INDUSTRIAL DE CURITIBA, CURITIBA - PR  
81270-370, BRAZIL

**SÃO PAULO, NORTE** - REINALDO RAINER - [REINALDO.RAINER@GMAIL.COM](mailto:REINALDO.RAINER@GMAIL.COM)

**PARANÁ E SANTA CATARINA** - ANGELO STEVES - [ESTEVESREP@OUTLOOK.COM](mailto:ESTEVESREP@OUTLOOK.COM)

**SÃO PAULO, LITORAL PAULISTA, VALE DO PARAÍBA, ALTO DO TIETÊ**  
JONAS CARNEIRO - [JONAS.VALEBASE@GMAIL.COM](mailto:JONAS.VALEBASE@GMAIL.COM)

**DEMAIS LOCALIZAÇÕES** - JOAO HENRIQUE - [JH@MESADISTRIBUTION.COM](mailto:JH@MESADISTRIBUTION.COM)

